

APPENDIX A: Prudhoe Bay Unit- Pipeline System Maps



Overview

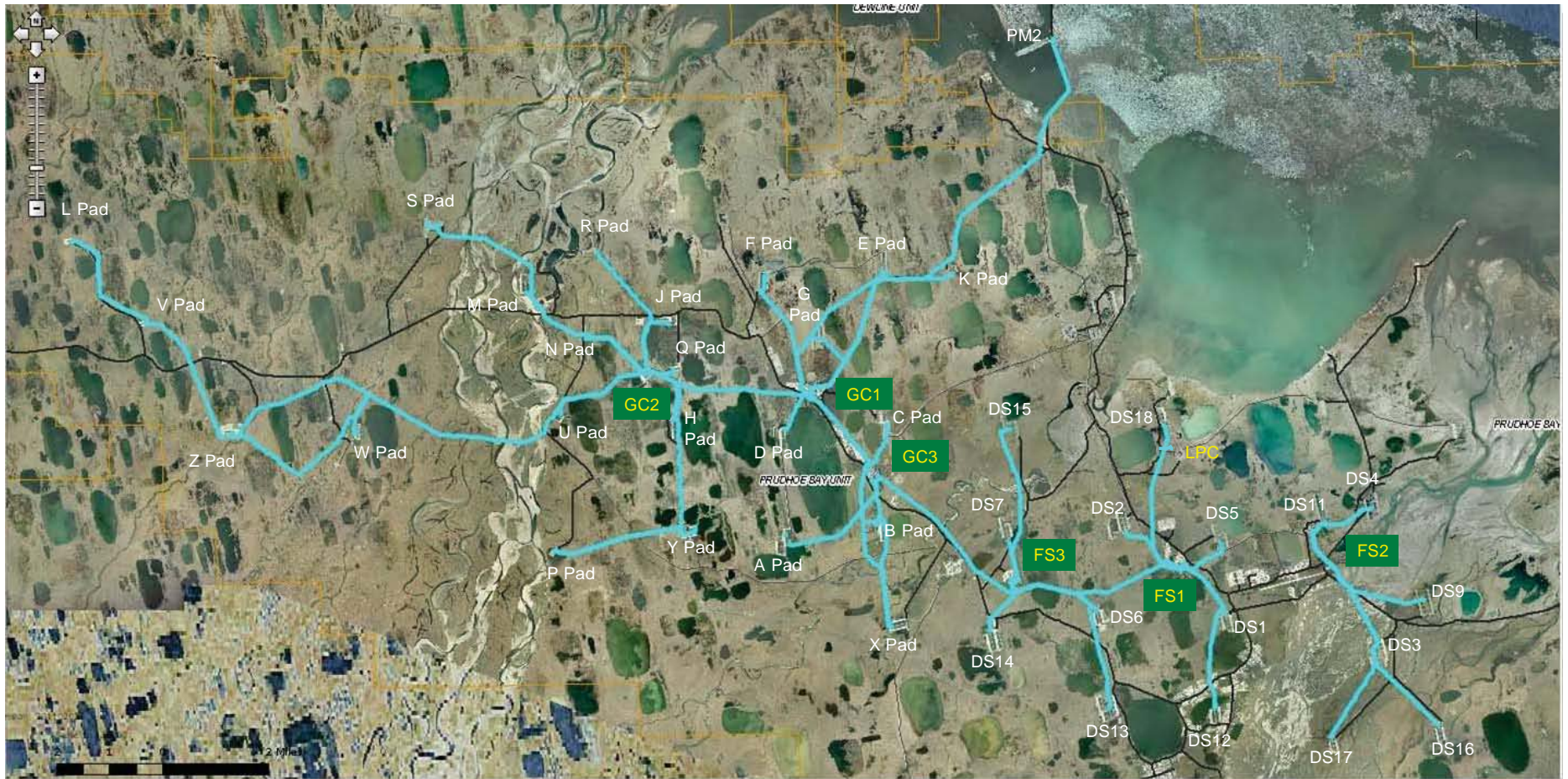


BPXA Consent Decree: 7 April 2011

APPENDIX A: Prudhoe Bay Unit - Pipeline System Maps



Overview

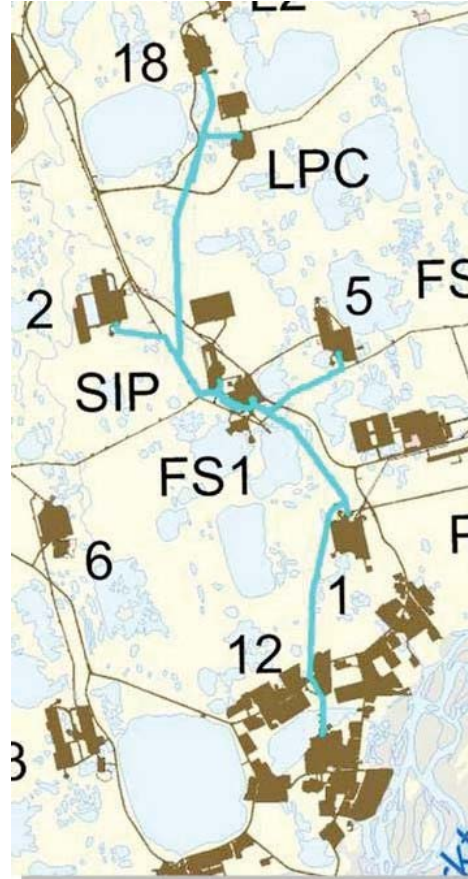
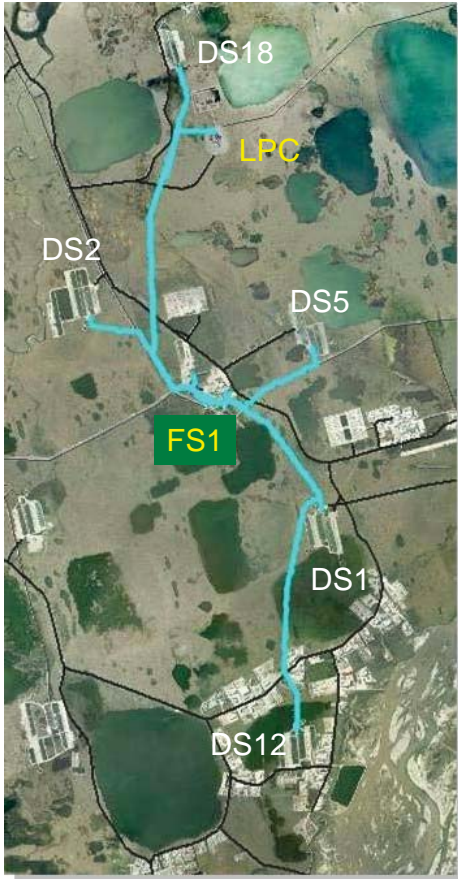


BPXA Consent Decree: 7 April 2011

APPENDIX A: Prudhoe Bay Unit - Pipeline System Maps



Flow Station 1 (FS1) Area



- FS1
Drill Sites**
- DS1
 - DS2
 - DS5
 - DS12
 - DS18

Flow Lines:

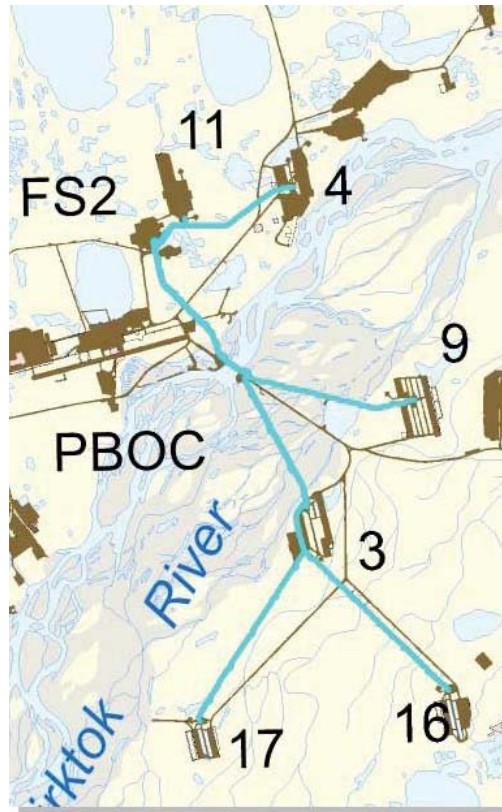
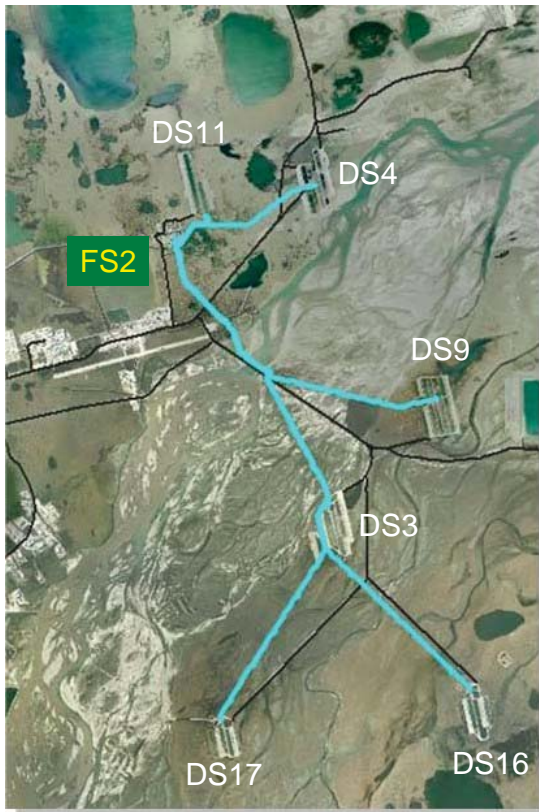
Equipment ID
01B
01C
01D
02B
02C
02D
02D/05E
02E
05B
05D
05E
12B
12C
18B
18D LPC-
SWI

Comment:
Produced Water Flow Line LPC-SWI to Lisburne Processing Center (LPC)

APPENDIX A: Prudhoe Bay Unit - Pipeline System Maps



Flow Station 2 (FS2) Area



- FS2**
Drill Sites
- DS3
 - DS4
 - DS9
 - DS11
 - DS16
 - DS17

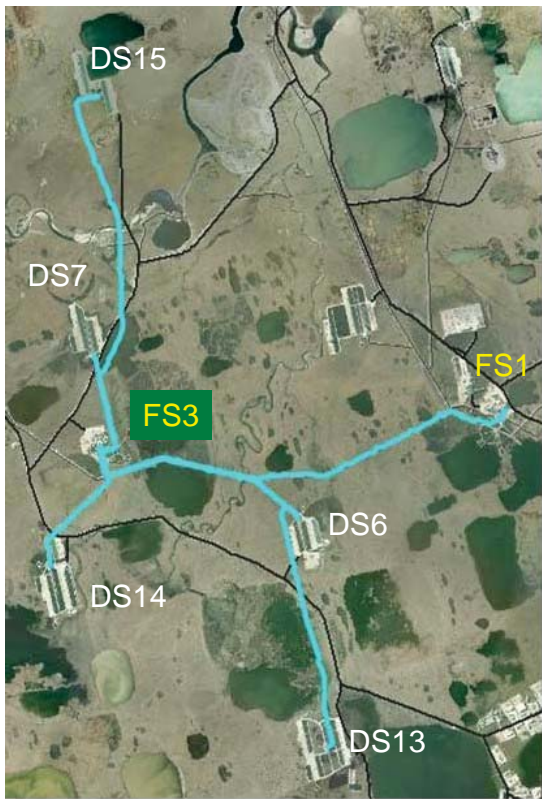
Flow Lines:

Equipment ID
03C
03D
03-SWI
04B
04C
04D
04-SWI
09A
09B
09E
09-SWI
11A
11D
16D
16-SWI
17D
17-SWI

APPENDIX A: Prudhoe Bay Unit - Pipeline System Maps



Flow Station 3 (FS3) Area



- FS3**
Drill Sites
- DS6
 - DS7
 - DS13
 - DS14
 - DS15

Flow Lines:

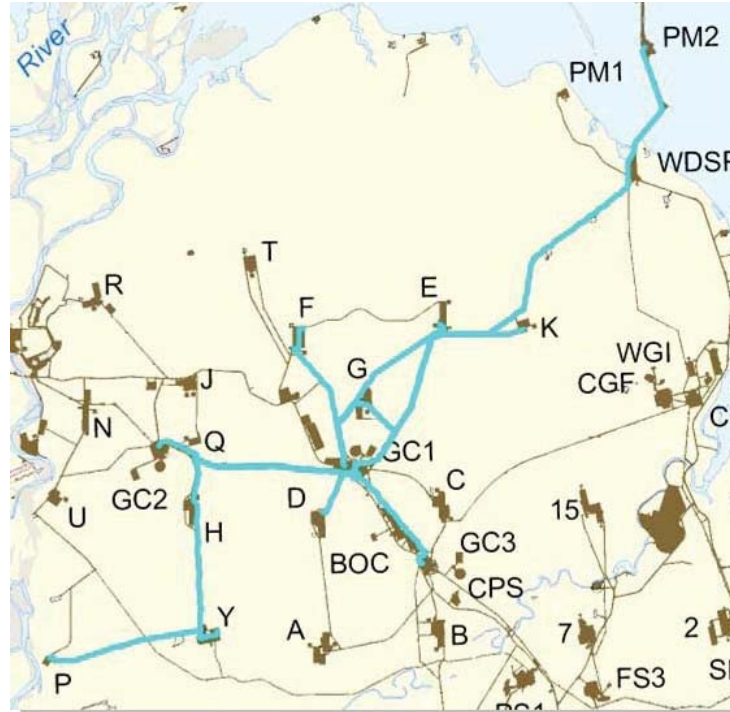
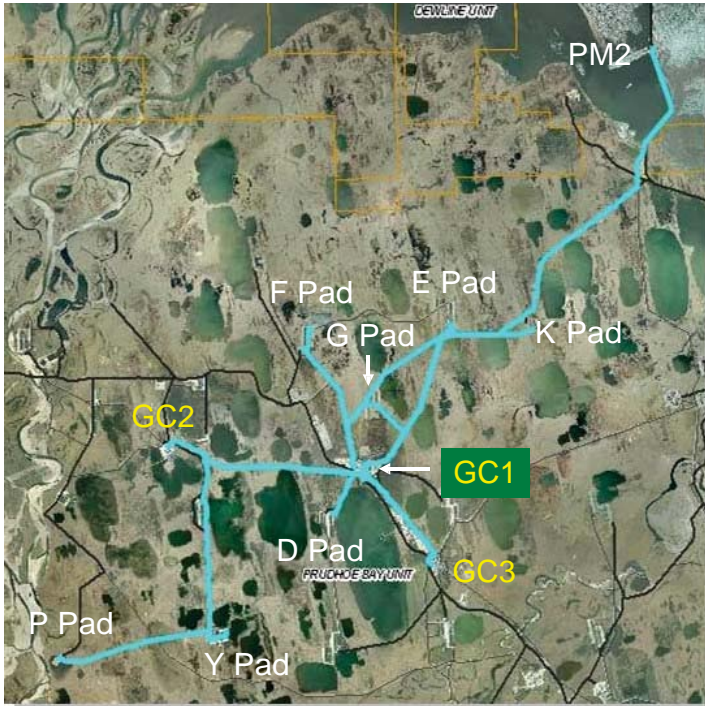
Equipment ID
06B
06C
06C/13B
06D
06E
07B
07C
07C/15C
07D
13B
13D
13-PWI
14B/14C
14D
14-PWI/SWI
15B
15C
15D
TLFS1/FS3

Comment:
 Line TLFS1/FS3 carries production between FS3 & FS1

APPENDIX A: Prudhoe Bay Unit - Pipeline System Maps



Gathering Center 1 (GC1) Area



- GC1 Well Pads**
- D Pad
 - E Pad
 - F Pad
 - G Pad
 - K Pad
 - P Pad
 - Y Pad
 - PM2*

Flow Lines:

Equipment ID
D-36
D-81
D-82
D-86
D-87
D-93
D-94
D-95
D-97
E-36
E-41
E-42
E-43
E-44
E-45
E-46
E-47
F-42
F-43
F-44
F-45
F-46
F-47
F-48
F-49
F-74
G-42
G-43
G-44
G-45
G-47
G-74
GHX-E
GHX-G
K-36
K-74
P-36
STP-36
WSW-2
XF-31
Y-36

Comments:

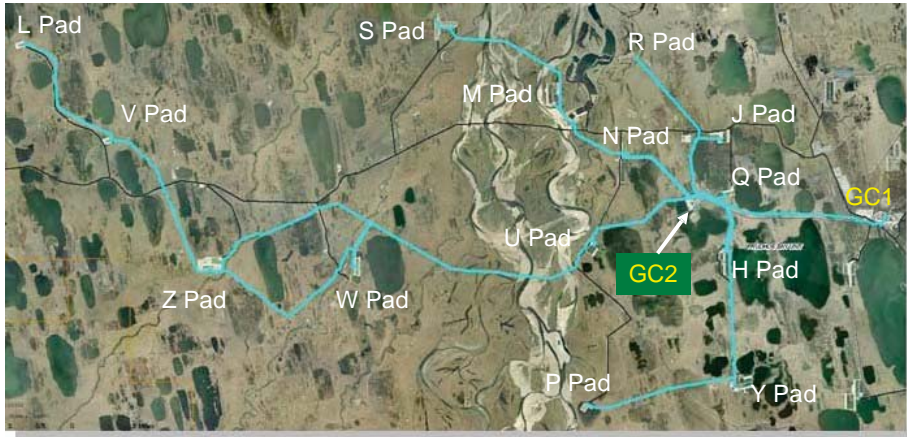
- *Point McIntyre 2 (PM2) Pad: Some production from this pad comes to GC1 through Flow Line STP-36
- Pipeline XF-31 carries production between GC1 and GC3
- Pipeline WSW-2 transports Produced Water between GC1 and GC2
- P Pad and Y Pad production goes to GC1, but Produced Water Injection for these pads comes from GC2 (see GC2 map)

APPENDIX A: Prudhoe Bay Unit - Pipeline System Maps



Flow Lines:
Equipment ID
GHX-J
H-42
H-43
H-44
H-45
H-46
H-47
H-69
H-74
J-41
J-42
J-44
J-45
J-46
J-47
J-48
J-74
EWE-69
L-74
LV-LDF
M-69
M-74
N-42
N-44
N-69
N-74
P-69
Q-01
Q-02
Q-03
Q-04
Q-05
Q-06
Q-07
R-46
R-36
S-36
S-69
U-69
U-384
V-69
V-74
W-69
W-74
WZ-LDF
XF-21
Y-42
Y-43
Y-46
Y-69
Z-69
Z-74

Gathering Center 2 (GC2) Area



- GC2**
- Well Pads**
- H Pad
 - J Pad
 - L Pad
 - M Pad
 - N Pad
 - P Pad (PWI only)
 - Q Pad
 - R Pad
 - S Pad
 - U Pad
 - V Pad
 - W Pad
 - Y Pad (PWI only)
 - Z Pad



Comments:

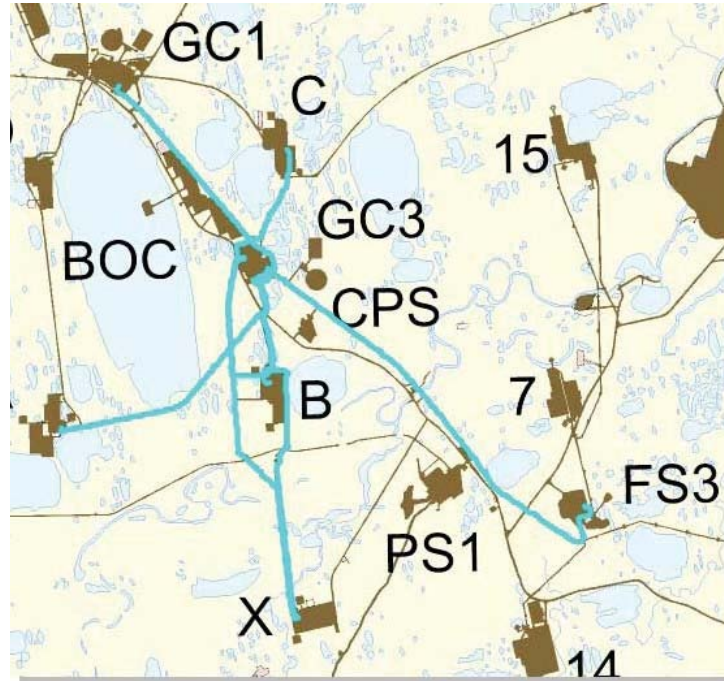
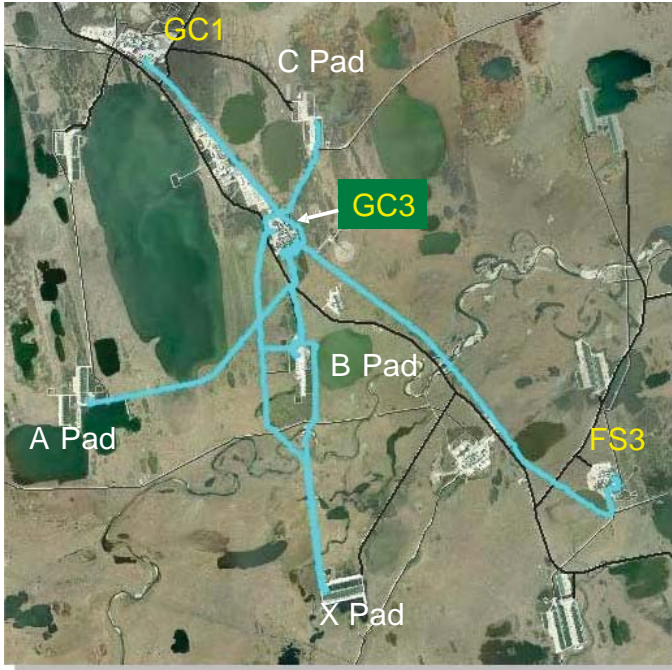
- P Pad and Y Pad production goes to GC1, but Produced Water Injection for these pads comes from GC2 (see GC1 map)
- XF-21 carries production between GC2 and GC1

BPXA Consent Decree: 7 April 2011

APPENDIX A: Prudhoe Bay Unit - Pipeline System Maps



Gathering Center 3 (GC3) Area



- GC3**
Well Pads
- A Pad
 - B Pad
 - C Pad
 - X Pad

Flow Lines:

Equipment ID
A-41
A-42
A-43
A-44
A-45
A-49
A-74
B-36
B-81
B-82
B-83
B-84
B-86
B-87
B-91
B-95
B-96
B-97
C-36
C-81
C-82
C-83
C-84
C-85
C-86
C-87
C-88
C-89
C-90
C-91
C-92
C-94
C-95
C-96
C-97
TLGC3/FS3
WSW-3
X-42
X-45
X-74

Comments:

- TLGC3/FS3 carries production between GC3 and FS3
- WSW-3 carries Produced Water between GC3 and GC1

APPENDIX A: Prudhoe Bay Unit - Pipeline System

Item	Facility	Location	Type	Service	Equipment ID / Well	ILI Piggable	Maint. Piggable
1	FS1	DS01	Well Line	Oil	01-01	No	No
2	FS1	DS01	Well Line	Oil	01-02	No	No
3	FS1	DS01	Well Line	Oil	01-03	No	No
4	FS1	DS01	Well Line	Oil	01-04	No	No
5	FS1	DS01	Well Line	Oil	01-05	No	No
6	FS1	DS01	Well Line	Oil	01-06	No	No
7	FS1	DS01	Well Line	Oil	01-07	No	No
8	FS1	DS01	Well Line	Oil	01-10	No	No
9	FS1	DS01	Well Line	Oil	01-12	No	No
10	FS1	DS01	Well Line	Oil	01-13	No	No
11	FS1	DS01	Well Line	Oil	01-14	No	No
12	FS1	DS01	Well Line	Oil	01-15	No	No
13	FS1	DS01	Well Line	Oil	01-16	No	No
14	FS1	DS01	Well Line	Oil	01-17	No	No
15	FS1	DS01	Well Line	Oil	01-18	No	No
16	FS1	DS01	Well Line	Oil	01-19	No	No
17	FS1	DS01	Well Line	Oil	01-20	No	No
18	FS1	DS01	Well Line	Oil	01-21	No	No
19	FS1	DS01	Well Line	Oil	01-22	No	No
20	FS1	DS01	Well Line	Oil	01-23	No	No
21	FS1	DS01	Well Line	Oil	01-24	No	No
22	FS1	DS01	Well Line	Oil	01-25	No	No
23	FS1	DS01	Well Line	Oil	01-26	No	No
24	FS1	DS01	Well Line	Oil	01-28	No	No
25	FS1	DS01	Well Line	Oil	01-29	No	No
26	FS1	DS01	Well Line	Oil	01-30	No	No
27	FS1	DS01	Well Line	Oil	01-31	No	No
28	FS1	DS01	Well Line	Oil	01-32	No	No
29	FS1	DS01	Well Line	Oil	01-33	No	No
30	FS1	DS01	Well Line	Oil	01-34	No	No
31	FS1	DS01	Flow Line	Oil	01B	No	No
32	FS1	DS01	Flow Line	Oil	01C	No	No
33	FS1	DS01	Flow Line	Oil	01D	No	No
34	FS1	DS02	Well Line	Oil	02-01	No	No
35	FS1	DS02	Well Line	Oil	02-02	No	No
36	FS1	DS02	Well Line	Oil	02-03	No	No
37	FS1	DS02	Well Line	Oil	02-04	No	No
38	FS1	DS02	Well Line	Oil	02-05	No	No

APPENDIX A: Prudhoe Bay Unit - Pipeline System

Item	Facility	Location	Type	Service	Equipment ID / Well	ILI Piggable	Maint. Piggable
39	FS1	DS02	Well Line	Oil	02-06	No	No
40	FS1	DS02	Well Line	Oil	02-07	No	No
41	FS1	DS02	Well Line	Oil	02-08	No	No
42	FS1	DS02	Well Line	Oil	02-09	No	No
43	FS1	DS02	Well Line	Oil	02-10	No	No
44	FS1	DS02	Well Line	Oil	02-11	No	No
45	FS1	DS02	Well Line	Oil	02-12	No	No
46	FS1	DS02	Well Line	Oil	02-13	No	No
47	FS1	DS02	Well Line	Oil	02-14	No	No
48	FS1	DS02	Well Line	Oil	02-15	No	No
49	FS1	DS02	Well Line	Oil	02-16	No	No
50	FS1	DS02	Well Line	Oil	02-17	No	No
51	FS1	DS02	Well Line	Oil	02-18	No	No
52	FS1	DS02	Well Line	Oil	02-19	No	No
53	FS1	DS02	Well Line	Oil	02-20	No	No
54	FS1	DS02	Well Line	Oil	02-21	No	No
55	FS1	DS02	Well Line	Oil	02-22	No	No
56	FS1	DS02	Well Line	Oil	02-23	No	No
57	FS1	DS02	Well Line	Oil	02-24	No	No
58	FS1	DS02	Well Line	Oil	02-25	No	No
59	FS1	DS02	Well Line	Oil	02-26	No	No
60	FS1	DS02	Well Line	Oil	02-27	No	No
61	FS1	DS02	Well Line	Oil	02-28	No	No
62	FS1	DS02	Well Line	Oil	02-29	No	No
63	FS1	DS02	Well Line	Oil	02-30	No	No
64	FS1	DS02	Well Line	Oil	02-31	No	No
65	FS1	DS02	Well Line	Oil	02-32	No	No
66	FS1	DS02	Well Line	Oil	02-33	No	No
67	FS1	DS02	Well Line	Oil	02-34	No	No
68	FS1	DS02	Well Line	Oil	02-35	No	No
69	FS1	DS02	Well Line	Oil	02-36	No	No
70	FS1	DS02	Well Line	Oil	02-37	No	No
71	FS1	DS02	Well Line	Oil	02-38	No	No
72	FS1	DS02	Well Line	Oil	02-39	No	No
73	FS1	DS02	Well Line	Oil	02-40	No	No
74	FS1	DS02	Flow Line	Oil	02B	No	No
75	FS1	DS02	Flow Line	Oil	02C	No	No
76	FS1	DS02	Flow Line	Oil	02D	No	No

APPENDIX A: Prudhoe Bay Unit - Pipeline System

Item	Facility	Location	Type	Service	Equipment ID / Well	ILI Piggable	Maint. Piggable
77	FS1	DS02	Flow Line	Oil	02D/05E	No	No
78	FS1	DS02	Flow Line	Oil	02E	No	No
79	FS2	DS03	Well Line	Oil	03-01	No	No
80	FS2	DS03	Well Line	Oil	03-02	No	No
81	FS2	DS03	Well Line	Oil	03-03	No	No
82	FS2	DS03	Well Line	Produced Water	03-04	No	No
83	FS2	DS03	Well Line	Produced Water	03-06	No	No
84	FS2	DS03	Well Line	Produced Water	03-07	No	No
85	FS2	DS03	Well Line	Oil	03-08	No	No
86	FS2	DS03	Well Line	Oil	03-09	No	No
87	FS2	DS03	Well Line	Produced Water	03-10	No	No
88	FS2	DS03	Well Line	Produced Water	03-11	No	No
89	FS2	DS03	Well Line	Produced Water	03-12	No	No
90	FS2	DS03	Well Line	Produced Water	03-13	No	No
91	FS2	DS03	Well Line	Oil	03-14	No	No
92	FS2	DS03	Well Line	Oil	03-15	No	No
93	FS2	DS03	Well Line	Produced Water	03-16	No	No
94	FS2	DS03	Well Line	Produced Water	03-17	No	No
95	FS2	DS03	Well Line	Produced Water	03-18	No	No
96	FS2	DS03	Well Line	Oil	03-19	No	No
97	FS2	DS03	Well Line	Oil	03-20	No	No
98	FS2	DS03	Well Line	Oil	03-21	No	No
99	FS2	DS03	Well Line	Oil	03-22	No	No
100	FS2	DS03	Well Line	Oil	03-23	No	No
101	FS2	DS03	Well Line	Oil	03-24	No	No
102	FS2	DS03	Well Line	Oil	03-25	No	No
103	FS2	DS03	Well Line	Oil	03-26	No	No
104	FS2	DS03	Well Line	Oil	03-27	No	No
105	FS2	DS03	Well Line	Oil	03-28	No	No
106	FS2	DS03	Well Line	Oil	03-29	No	No
107	FS2	DS03	Well Line	Oil	03-30	No	No
108	FS2	DS03	Well Line	Oil	03-31	No	No
109	FS2	DS03	Well Line	Oil	03-32	No	No
110	FS2	DS03	Well Line	Produced Water	03-33	No	No
111	FS2	DS03	Well Line	Oil	03-34	No	No
112	FS2	DS03	Well Line	Oil	03-35	No	No
113	FS2	DS03	Well Line	Produced Water	03-36	No	No
114	FS2	DS03	Well Line	Produced Water	03-37	No	No

APPENDIX A: Prudhoe Bay Unit - Pipeline System

Item	Facility	Location	Type	Service	Equipment ID / Well	ILI Piggable	Maint. Piggable
115	FS2	DS03	Flow Line	Oil	03C	No	No
116	FS2	DS03	Flow Line	Oil	03D	Yes	No
117	FS2	DS03	Flow Line	Produced Water	03-SWI	Yes	Yes
118	FS2	DS04	Well Line	Oil	04-01	No	No
119	FS2	DS04	Well Line	Oil	04-02	No	No
120	FS2	DS04	Well Line	Oil	04-03	No	No
121	FS2	DS04	Well Line	Oil	04-04	No	No
122	FS2	DS04	Well Line	Oil	04-05	No	No
123	FS2	DS04	Well Line	Produced Water	04-06	No	No
124	FS2	DS04	Well Line	Oil	04-07	No	No
125	FS2	DS04	Well Line	Produced Water	04-08	No	No
126	FS2	DS04	Well Line	Produced Water	04-09	No	No
127	FS2	DS04	Well Line	Produced Water	04-10	No	No
128	FS2	DS04	Well Line	Produced Water	04-14	No	No
129	FS2	DS04	Well Line	Produced Water	04-15	No	No
130	FS2	DS04	Well Line	Oil	04-16	No	No
131	FS2	DS04	Well Line	Produced Water	04-17	No	No
132	FS2	DS04	Well Line	Oil	04-18	No	No
133	FS2	DS04	Well Line	Produced Water	04-19	No	No
134	FS2	DS04	Well Line	Produced Water	04-20	No	No
135	FS2	DS04	Well Line	Oil	04-21	No	No
136	FS2	DS04	Well Line	Oil	04-22	No	No
137	FS2	DS04	Well Line	Oil	04-23	No	No
138	FS2	DS04	Well Line	Oil	04-24	No	No
139	FS2	DS04	Well Line	Produced Water	04-25	No	No
140	FS2	DS04	Well Line	Oil	04-26	No	No
141	FS2	DS04	Well Line	Produced Water	04-27	No	No
142	FS2	DS04	Well Line	Produced Water	04-28	No	No
143	FS2	DS04	Well Line	Oil	04-29	No	No
144	FS2	DS04	Well Line	Oil	04-30	No	No
145	FS2	DS04	Well Line	Oil	04-31	No	No
146	FS2	DS04	Well Line	Oil	04-32	No	No
147	FS2	DS04	Well Line	Oil	04-33	No	No
148	FS2	DS04	Well Line	Oil	04-34	No	No
149	FS2	DS04	Well Line	Oil	04-35	No	No
150	FS2	DS04	Well Line	Oil	04-36	No	No
151	FS2	DS04	Well Line	Oil	04-37	No	No
152	FS2	DS04	Well Line	Oil	04-38	No	No

APPENDIX A: Prudhoe Bay Unit - Pipeline System

Item	Facility	Location	Type	Service	Equipment ID / Well	ILI Piggable	Maint. Piggable
153	FS2	DS04	Well Line	Oil	04-40	No	No
154	FS2	DS04	Well Line	Oil	04-41	No	No
155	FS2	DS04	Well Line	Produced Water	04-42	No	No
156	FS2	DS04	Well Line	Produced Water	04-43	No	No
157	FS2	DS04	Well Line	Produced Water	04-44	No	No
158	FS2	DS04	Well Line	Produced Water	04-45	No	No
159	FS2	DS04	Well Line	Oil	04-46	No	No
160	FS2	DS04	Well Line	Oil	04-47	No	No
161	FS2	DS04	Well Line	Oil	04-48	No	No
162	FS2	DS04	Flow Line	Oil	04B	No	No
163	FS2	DS04	Flow Line	Oil	04C	Yes	No
164	FS2	DS04	Flow Line	Oil	04D	No	No
165	FS2	DS04	Flow Line	Produced Water	04-SWI	Yes	Yes
166	FS1	DS05	Well Line	Oil	05-01	No	No
167	FS1	DS05	Well Line	Oil	05-02	No	No
168	FS1	DS05	Well Line	Oil	05-03	No	No
169	FS1	DS05	Well Line	Oil	05-04	No	No
170	FS1	DS05	Well Line	Oil	05-05	No	No
171	FS1	DS05	Well Line	Oil	05-06	No	No
172	FS1	DS05	Well Line	Oil	05-07	No	No
173	FS1	DS05	Well Line	Oil	05-08	No	No
174	FS1	DS05	Well Line	Oil	05-09	No	No
175	FS1	DS05	Well Line	Oil	05-10	No	No
176	FS1	DS05	Well Line	Oil	05-11	No	No
177	FS1	DS05	Well Line	Oil	05-12	No	No
178	FS1	DS05	Well Line	Oil	05-13	No	No
179	FS1	DS05	Well Line	Oil	05-14	No	No
180	FS1	DS05	Well Line	Oil	05-15	No	No
181	FS1	DS05	Well Line	Oil	05-16	No	No
182	FS1	DS05	Well Line	Oil	05-17	No	No
183	FS1	DS05	Well Line	Oil	05-18	No	No
184	FS1	DS05	Well Line	Oil	05-19	No	No
185	FS1	DS05	Well Line	Oil	05-20	No	No
186	FS1	DS05	Well Line	Oil	05-21	No	No
187	FS1	DS05	Well Line	Oil	05-22	No	No
188	FS1	DS05	Well Line	Oil	05-23	No	No
189	FS1	DS05	Well Line	Oil	05-24	No	No
190	FS1	DS05	Well Line	Oil	05-25	No	No

APPENDIX A: Prudhoe Bay Unit - Pipeline System

Item	Facility	Location	Type	Service	Equipment ID / Well	ILI Piggable	Maint. Piggable
191	FS1	DS05	Well Line	Oil	05-26	No	No
192	FS1	DS05	Well Line	Oil	05-27	No	No
193	FS1	DS05	Well Line	Oil	05-28	No	No
194	FS1	DS05	Well Line	Oil	05-30	No	No
195	FS1	DS05	Well Line	Oil	05-31	No	No
196	FS1	DS05	Well Line	Oil	05-32	No	No
197	FS1	DS05	Well Line	Oil	05-33	No	No
198	FS1	DS05	Well Line	Oil	05-34	No	No
199	FS1	DS05	Well Line	Oil	05-35	No	No
200	FS1	DS05	Well Line	Oil	05-36	No	No
201	FS1	DS05	Well Line	Oil	05-38	No	No
202	FS1	DS05	Well Line	Oil	05-39	No	No
203	FS1	DS05	Well Line	Oil	05-40	No	No
204	FS1	DS05	Well Line	Oil	05-41	No	No
205	FS1	DS05	Flow Line	Oil	05B	No	No
206	FS1	DS05	Flow Line	Oil	05D	No	No
207	FS1	DS05	Flow Line	Oil	05E	No	No
208	FS3	DS06	Well Line	Oil	06-01	No	No
209	FS3	DS06	Well Line	Oil	06-02	No	No
210	FS3	DS06	Well Line	Oil	06-03	No	No
211	FS3	DS06	Well Line	Oil	06-04	No	No
212	FS3	DS06	Well Line	Oil	06-05	No	No
213	FS3	DS06	Well Line	Oil	06-06	No	No
214	FS3	DS06	Well Line	Oil	06-07	No	No
215	FS3	DS06	Well Line	Oil	06-08	No	No
216	FS3	DS06	Well Line	Oil	06-09	No	No
217	FS3	DS06	Well Line	Oil	06-10	No	No
218	FS3	DS06	Well Line	Oil	06-11	No	No
219	FS3	DS06	Well Line	Oil	06-12	No	No
220	FS3	DS06	Well Line	Oil	06-13	No	No
221	FS3	DS06	Well Line	Oil	06-14	No	No
222	FS3	DS06	Well Line	Oil	06-15	No	No
223	FS3	DS06	Well Line	Oil	06-16	No	No
224	FS3	DS06	Well Line	Oil	06-17	No	No
225	FS3	DS06	Well Line	Oil	06-18	No	No
226	FS3	DS06	Well Line	Oil	06-19	No	No
227	FS3	DS06	Well Line	Oil	06-20	No	No
228	FS3	DS06	Well Line	Oil	06-21	No	No

APPENDIX A: Prudhoe Bay Unit - Pipeline System

Item	Facility	Location	Type	Service	Equipment ID / Well	ILI Piggable	Maint. Piggable
229	FS3	DS06	Well Line	Oil	06-22	No	No
230	FS3	DS06	Well Line	Oil	06-23	No	No
231	FS3	DS06	Well Line	Oil	06-24	No	No
232	FS3	DS06	Flow Line	Oil	06B	No	No
233	FS3	DS06	Flow Line	Oil	06C	No	No
234	FS3	DS06	Flow Line	Oil	06C/13B	Yes	No
235	FS3	DS06	Flow Line	Oil	06D	No	No
236	FS3	DS06	Flow Line	Oil	06E	No	No
237	FS3	DS07	Well Line	Oil	07-01	No	No
238	FS3	DS07	Well Line	Oil	07-02	No	No
239	FS3	DS07	Well Line	Oil	07-03	No	No
240	FS3	DS07	Well Line	Oil	07-04	No	No
241	FS3	DS07	Well Line	Oil	07-05	No	No
242	FS3	DS07	Well Line	Oil	07-06	No	No
243	FS3	DS07	Well Line	Oil	07-07	No	No
244	FS3	DS07	Well Line	Oil	07-08	No	No
245	FS3	DS07	Well Line	Oil	07-09	No	No
246	FS3	DS07	Well Line	Oil	07-10	No	No
247	FS3	DS07	Well Line	Oil	07-11	No	No
248	FS3	DS07	Well Line	Oil	07-12	No	No
249	FS3	DS07	Well Line	Oil	07-13	No	No
250	FS3	DS07	Well Line	Oil	07-14	No	No
251	FS3	DS07	Well Line	Oil	07-15	No	No
252	FS3	DS07	Well Line	Oil	07-16	No	No
253	FS3	DS07	Well Line	Oil	07-17	No	No
254	FS3	DS07	Well Line	Oil	07-18	No	No
255	FS3	DS07	Well Line	Oil	07-19	No	No
256	FS3	DS07	Well Line	Oil	07-20	No	No
257	FS3	DS07	Well Line	Oil	07-21	No	No
258	FS3	DS07	Well Line	Oil	07-22	No	No
259	FS3	DS07	Well Line	Oil	07-23	No	No
260	FS3	DS07	Well Line	Oil	07-24	No	No
261	FS3	DS07	Well Line	Oil	07-25	No	No
262	FS3	DS07	Well Line	Oil	07-26	No	No
263	FS3	DS07	Well Line	Oil	07-28	No	No
264	FS3	DS07	Well Line	Oil	07-29	No	No
265	FS3	DS07	Well Line	Oil	07-30	No	No
266	FS3	DS07	Well Line	Oil	07-32	No	No

APPENDIX A: Prudhoe Bay Unit - Pipeline System

Item	Facility	Location	Type	Service	Equipment ID / Well	ILI Piggable	Maint. Piggable
267	FS3	DS07	Well Line	Oil	07-33	No	No
268	FS3	DS07	Well Line	Oil	07-34	No	No
269	FS3	DS07	Well Line	Oil	07-35	No	No
270	FS3	DS07	Well Line	Oil	07-36	No	No
271	FS3	DS07	Well Line	Oil	07-37	No	No
272	FS3	DS07	Flow Line	Oil	07B	No	No
273	FS3	DS07	Flow Line	Oil	07C	No	No
274	FS3	DS07	Flow Line	Oil	07C/15C	No	No
275	FS3	DS07	Flow Line	Oil	07D	No	No
276	FS2	DS09	Well Line	Oil	09-01	No	No
277	FS2	DS09	Well Line	Oil	09-02	No	No
278	FS2	DS09	Well Line	Oil	09-03	No	No
279	FS2	DS09	Well Line	Oil	09-04	No	No
280	FS2	DS09	Well Line	Oil	09-05	No	No
281	FS2	DS09	Well Line	Oil	09-06	No	No
282	FS2	DS09	Well Line	Oil	09-07	No	No
283	FS2	DS09	Well Line	Produced Water	09-08	No	No
284	FS2	DS09	Well Line	Oil	09-09	No	No
285	FS2	DS09	Well Line	Produced Water	09-10	No	No
286	FS2	DS09	Well Line	Oil	09-11	No	No
287	FS2	DS09	Well Line	Produced Water	09-12	No	No
288	FS2	DS09	Well Line	Oil	09-13	No	No
289	FS2	DS09	Well Line	Produced Water	09-14	No	No
290	FS2	DS09	Well Line	Produced Water	09-15	No	No
291	FS2	DS09	Well Line	Produced Water	09-16	No	No
292	FS2	DS09	Well Line	Produced Water	09-17	No	No
293	FS2	DS09	Well Line	Produced Water	09-18	No	No
294	FS2	DS09	Well Line	Produced Water	09-19	No	No
295	FS2	DS09	Well Line	Produced Water	09-20	No	No
296	FS2	DS09	Well Line	Oil	09-21	No	No
297	FS2	DS09	Well Line	Produced Water	09-22	No	No
298	FS2	DS09	Well Line	Oil	09-23	No	No
299	FS2	DS09	Well Line	Oil	09-24	No	No
300	FS2	DS09	Well Line	Produced Water	09-25	No	No
301	FS2	DS09	Well Line	Oil	09-26	No	No
302	FS2	DS09	Well Line	Oil	09-27	No	No
303	FS2	DS09	Well Line	Oil	09-28	No	No
304	FS2	DS09	Well Line	Oil	09-29	No	No

APPENDIX A: Prudhoe Bay Unit - Pipeline System

Item	Facility	Location	Type	Service	Equipment ID / Well	ILI Piggable	Maint. Piggable
305	FS2	DS09	Well Line	Oil	09-30	No	No
306	FS2	DS09	Well Line	Produced Water	09-31	No	No
307	FS2	DS09	Well Line	Produced Water	09-32	No	No
308	FS2	DS09	Well Line	Oil	09-33	No	No
309	FS2	DS09	Well Line	Oil	09-34	No	No
310	FS2	DS09	Well Line	Oil	09-35	No	No
311	FS2	DS09	Well Line	Produced Water	09-36	No	No
312	FS2	DS09	Well Line	Produced Water	09-37	No	No
313	FS2	DS09	Well Line	Produced Water	09-38	No	No
314	FS2	DS09	Well Line	Produced Water	09-39	No	No
315	FS2	DS09	Well Line	Produced Water	09-40	No	No
316	FS2	DS09	Well Line	Oil	09-41	No	No
317	FS2	DS09	Well Line	Oil	09-42	No	No
318	FS2	DS09	Well Line	Oil	09-43	No	No
319	FS2	DS09	Well Line	Oil	09-44	No	No
320	FS2	DS09	Well Line	Oil	09-45	No	No
321	FS2	DS09	Well Line	Oil	09-46	No	No
322	FS2	DS09	Well Line	Oil	09-47	No	No
323	FS2	DS09	Well Line	Oil	09-48	No	No
324	FS2	DS09	Well Line	Oil	09-49	No	No
325	FS2	DS09	Well Line	Oil	09-50	No	No
326	FS2	DS09	Well Line	Produced Water	09-51	No	No
327	FS2	DS09	Flow Line	Oil	09A	Yes	No
328	FS2	DS09	Flow Line	Oil	09B	Yes	No
329	FS2	DS09	Flow Line	Oil	09E	Yes	No
330	FS2	DS09	Flow Line	Produced Water	09-SWI	Yes	Yes
331	FS2	DS11	Well Line	Oil	11-01	No	No
332	FS2	DS11	Well Line	Oil	11-03	No	No
333	FS2	DS11	Well Line	Oil	11-04	No	No
334	FS2	DS11	Well Line	Oil	11-05	No	No
335	FS2	DS11	Well Line	Oil	11-06	No	No
336	FS2	DS11	Well Line	Oil	11-09	No	No
337	FS2	DS11	Well Line	Oil	11-11	No	No
338	FS2	DS11	Well Line	Oil	11-12	No	No
339	FS2	DS11	Well Line	Oil	11-13	No	No
340	FS2	DS11	Well Line	Oil	11-16	No	No
341	FS2	DS11	Well Line	Oil	11-17	No	No
342	FS2	DS11	Well Line	Oil	11-18	No	No

APPENDIX A: Prudhoe Bay Unit - Pipeline System

Item	Facility	Location	Type	Service	Equipment ID / Well	ILI Piggable	Maint. Piggable
343	FS2	DS11	Well Line	Oil	11-22	No	No
344	FS2	DS11	Well Line	Oil	11-23	No	No
345	FS2	DS11	Well Line	Oil	11-24	No	No
346	FS2	DS11	Well Line	Oil	11-25	No	No
347	FS2	DS11	Well Line	Oil	11-27	No	No
348	FS2	DS11	Well Line	Oil	11-28	No	No
349	FS2	DS11	Well Line	Oil	11-30	No	No
350	FS2	DS11	Well Line	Oil	11-31	No	No
351	FS2	DS11	Well Line	Oil	11-32	No	No
352	FS2	DS11	Well Line	Oil	11-33	No	No
353	FS2	DS11	Well Line	Oil	11-34	No	No
354	FS2	DS11	Well Line	Oil	11-36	No	No
355	FS2	DS11	Well Line	Oil	11-37	No	No
356	FS2	DS11	Well Line	Oil	11-38	No	No
357	FS2	DS11	Flow Line	Oil	11A	No	No
358	FS2	DS11	Flow Line	Oil	11D	Yes	No
359	FS1	DS12	Well Line	Oil	12-01	No	No
360	FS1	DS12	Well Line	Oil	12-03	No	No
361	FS1	DS12	Well Line	Oil	12-04	No	No
362	FS1	DS12	Well Line	Oil	12-05	No	No
363	FS1	DS12	Well Line	Oil	12-06	No	No
364	FS1	DS12	Well Line	Oil	12-07	No	No
365	FS1	DS12	Well Line	Oil	12-08	No	No
366	FS1	DS12	Well Line	Oil	12-09	No	No
367	FS1	DS12	Well Line	Oil	12-10	No	No
368	FS1	DS12	Well Line	Oil	12-11	No	No
369	FS1	DS12	Well Line	Oil	12-12	No	No
370	FS1	DS12	Well Line	Oil	12-13	No	No
371	FS1	DS12	Well Line	Oil	12-14	No	No
372	FS1	DS12	Well Line	Oil	12-15	No	No
373	FS1	DS12	Well Line	Oil	12-16	No	No
374	FS1	DS12	Well Line	Oil	12-17	No	No
375	FS1	DS12	Well Line	Oil	12-18	No	No
376	FS1	DS12	Well Line	Oil	12-22	No	No
377	FS1	DS12	Well Line	Oil	12-26	No	No
378	FS1	DS12	Well Line	Oil	12-28	No	No
379	FS1	DS12	Well Line	Oil	12-29	No	No
380	FS1	DS12	Well Line	Oil	12-32	No	No

APPENDIX A: Prudhoe Bay Unit - Pipeline System

Item	Facility	Location	Type	Service	Equipment ID / Well	ILI Piggable	Maint. Piggable
381	FS1	DS12	Well Line	Oil	12-35	No	No
382	FS1	DS12	Well Line	Oil	12-36	No	No
383	FS1	DS12	Well Line	Oil	12-37	No	No
384	FS1	DS12	Flow Line	Oil	12B	Yes	No
385	FS1	DS12	Flow Line	Oil	12C	Yes	No
386	FS3	DS13	Well Line	Oil	13-01	No	No
387	FS3	DS13	Well Line	Oil	13-02	No	No
388	FS3	DS13	Well Line	Oil	13-03	No	No
389	FS3	DS13	Well Line	Oil	13-04	No	No
390	FS3	DS13	Well Line	Oil	13-05	No	No
391	FS3	DS13	Well Line	Produced Water	13-06	No	No
392	FS3	DS13	Well Line	Oil	13-07	No	No
393	FS3	DS13	Well Line	Oil	13-08	No	No
394	FS3	DS13	Well Line	Produced Water	13-09	No	No
395	FS3	DS13	Well Line	Oil	13-10	No	No
396	FS3	DS13	Well Line	Oil	13-11	No	No
397	FS3	DS13	Well Line	Oil	13-12	No	No
398	FS3	DS13	Well Line	Oil	13-13	No	No
399	FS3	DS13	Well Line	Oil	13-14	No	No
400	FS3	DS13	Well Line	Produced Water	13-15	No	No
401	FS3	DS13	Well Line	Produced Water	13-16	No	No
402	FS3	DS13	Well Line	Produced Water	13-17	No	No
403	FS3	DS13	Well Line	Produced Water	13-18	No	No
404	FS3	DS13	Well Line	Produced Water	13-19	No	No
405	FS3	DS13	Well Line	Produced Water	13-20	No	No
406	FS3	DS13	Well Line	Produced Water	13-21	No	No
407	FS3	DS13	Well Line	Produced Water	13-22	No	No
408	FS3	DS13	Well Line	Produced Water	13-23	No	No
409	FS3	DS13	Well Line	Produced Water	13-24	No	No
410	FS3	DS13	Well Line	Produced Water	13-25	No	No
411	FS3	DS13	Well Line	Oil	13-26	No	No
412	FS3	DS13	Well Line	Oil	13-27	No	No
413	FS3	DS13	Well Line	Oil	13-28	No	No
414	FS3	DS13	Well Line	Oil	13-29	No	No
415	FS3	DS13	Well Line	Oil	13-30	No	No
416	FS3	DS13	Well Line	Produced Water	13-31	No	No
417	FS3	DS13	Well Line	Produced Water	13-32	No	No
418	FS3	DS13	Well Line	Oil	13-33	No	No

APPENDIX A: Prudhoe Bay Unit - Pipeline System

Item	Facility	Location	Type	Service	Equipment ID / Well	ILI Piggable	Maint. Piggable
419	FS3	DS13	Well Line	Oil	13-34	No	No
420	FS3	DS13	Well Line	Produced Water	13-35	No	No
421	FS3	DS13	Well Line	Produced Water	13-36	No	No
422	FS3	DS13	Well Line	Oil	13-37	No	No
423	FS3	DS13	Flow Line	Oil	13B	Yes	No
424	FS3	DS13	Flow Line	Oil	13D	No	No
425	FS3	DS13	Flow Line	Produced Water	13-PWI	No	Yes
426	FS3	DS14	Well Line	Produced Water	14-01	No	No
427	FS3	DS14	Well Line	Oil	14-02	No	No
428	FS3	DS14	Well Line	Oil	14-03	No	No
429	FS3	DS14	Well Line	Oil	14-04	No	No
430	FS3	DS14	Well Line	Oil	14-05	No	No
431	FS3	DS14	Well Line	Oil	14-06	No	No
432	FS3	DS14	Well Line	Oil	14-07	No	No
433	FS3	DS14	Well Line	Oil	14-08	No	No
434	FS3	DS14	Well Line	Oil	14-09	No	No
435	FS3	DS14	Well Line	Oil	14-10	No	No
436	FS3	DS14	Well Line	Oil	14-11	No	No
437	FS3	DS14	Well Line	Oil	14-12	No	No
438	FS3	DS14	Well Line	Produced Water	14-13	No	No
439	FS3	DS14	Well Line	Produced Water	14-14	No	No
440	FS3	DS14	Well Line	Oil	14-15	No	No
441	FS3	DS14	Well Line	Oil	14-16	No	No
442	FS3	DS14	Well Line	Produced Water	14-17	No	No
443	FS3	DS14	Well Line	Oil	14-18	No	No
444	FS3	DS14	Well Line	Oil	14-19	No	No
445	FS3	DS14	Well Line	Oil	14-20	No	No
446	FS3	DS14	Well Line	Produced Water	14-21	No	No
447	FS3	DS14	Well Line	Oil	14-22	No	No
448	FS3	DS14	Well Line	Oil	14-23	No	No
449	FS3	DS14	Well Line	Oil	14-24	No	No
450	FS3	DS14	Well Line	Produced Water	14-25	No	No
451	FS3	DS14	Well Line	Oil	14-26	No	No
452	FS3	DS14	Well Line	Produced Water	14-27	No	No
453	FS3	DS14	Well Line	Oil	14-28	No	No
454	FS3	DS14	Well Line	Oil	14-29	No	No
455	FS3	DS14	Well Line	Oil	14-30	No	No
456	FS3	DS14	Well Line	Oil	14-31	No	No

APPENDIX A: Prudhoe Bay Unit - Pipeline System

Item	Facility	Location	Type	Service	Equipment ID / Well	ILI Piggable	Maint. Piggable
457	FS3	DS14	Well Line	Oil	14-32	No	No
458	FS3	DS14	Well Line	Oil	14-33	No	No
459	FS3	DS14	Well Line	Oil	14-34	No	No
460	FS3	DS14	Well Line	Produced Water	14-35	No	No
461	FS3	DS14	Well Line	Produced Water	14-36	No	No
462	FS3	DS14	Well Line	Oil	14-37	No	No
463	FS3	DS14	Well Line	Oil	14-38	No	No
464	FS3	DS14	Well Line	Oil	14-39	No	No
465	FS3	DS14	Well Line	Oil	14-40	No	No
466	FS3	DS14	Well Line	Oil	14-41	No	No
467	FS3	DS14	Well Line	Oil	14-43	No	No
468	FS3	DS14	Well Line	Oil	14-44	No	No
469	FS3	DS14	Flow Line	Oil	14B/14C	Yes	No
470	FS3	DS14	Flow Line	Oil	14D	Yes	No
471	FS3	DS14	Flow Line	Produced Water	14-PWI/SWI	Yes	Yes
472	FS3	DS15	Well Line	Oil	15-01	No	No
473	FS3	DS15	Well Line	Oil	15-02	No	No
474	FS3	DS15	Well Line	Oil	15-03	No	No
475	FS3	DS15	Well Line	Oil	15-04	No	No
476	FS3	DS15	Well Line	Oil	15-05	No	No
477	FS3	DS15	Well Line	Oil	15-06	No	No
478	FS3	DS15	Well Line	Oil	15-07	No	No
479	FS3	DS15	Well Line	Oil	15-08	No	No
480	FS3	DS15	Well Line	Oil	15-09	No	No
481	FS3	DS15	Well Line	Oil	15-10	No	No
482	FS3	DS15	Well Line	Oil	15-11	No	No
483	FS3	DS15	Well Line	Oil	15-12	No	No
484	FS3	DS15	Well Line	Oil	15-13	No	No
485	FS3	DS15	Well Line	Oil	15-14	No	No
486	FS3	DS15	Well Line	Oil	15-15	No	No
487	FS3	DS15	Well Line	Oil	15-16	No	No
488	FS3	DS15	Well Line	Oil	15-17	No	No
489	FS3	DS15	Well Line	Oil	15-18	No	No
490	FS3	DS15	Well Line	Oil	15-19	No	No
491	FS3	DS15	Well Line	Oil	15-20	No	No
492	FS3	DS15	Well Line	Oil	15-21	No	No
493	FS3	DS15	Well Line	Oil	15-22	No	No
494	FS3	DS15	Well Line	Oil	15-23	No	No

APPENDIX A: Prudhoe Bay Unit - Pipeline System

Item	Facility	Location	Type	Service	Equipment ID / Well	ILI Piggable	Maint. Piggable
495	FS3	DS15	Well Line	Oil	15-24	No	No
496	FS3	DS15	Well Line	Oil	15-25	No	No
497	FS3	DS15	Well Line	Oil	15-26	No	No
498	FS3	DS15	Well Line	Oil	15-27	No	No
499	FS3	DS15	Well Line	Oil	15-28	No	No
500	FS3	DS15	Well Line	Oil	15-29	No	No
501	FS3	DS15	Well Line	Oil	15-30	No	No
502	FS3	DS15	Well Line	Oil	15-31	No	No
503	FS3	DS15	Well Line	Oil	15-32	No	No
504	FS3	DS15	Well Line	Oil	15-33	No	No
505	FS3	DS15	Well Line	Oil	15-34	No	No
506	FS3	DS15	Well Line	Oil	15-35	No	No
507	FS3	DS15	Well Line	Oil	15-36	No	No
508	FS3	DS15	Well Line	Oil	15-37	No	No
509	FS3	DS15	Well Line	Oil	15-38	No	No
510	FS3	DS15	Well Line	Oil	15-39	No	No
511	FS3	DS15	Well Line	Oil	15-40	No	No
512	FS3	DS15	Well Line	Oil	15-41	No	No
513	FS3	DS15	Well Line	Oil	15-42	No	No
514	FS3	DS15	Well Line	Oil	15-43	No	No
515	FS3	DS15	Well Line	Oil	15-44	No	No
516	FS3	DS15	Well Line	Oil	15-45	No	No
517	FS3	DS15	Well Line	Oil	15-46	No	No
518	FS3	DS15	Well Line	Oil	15-47	No	No
519	FS3	DS15	Well Line	Oil	15-48	No	No
520	FS3	DS15	Well Line	Oil	15-49	No	No
521	FS3	DS15	Flow Line	Oil	15B	No	No
522	FS3	DS15	Flow Line	Oil	15C	Yes	No
523	FS3	DS15	Flow Line	Oil	15D	No	No
524	FS2	DS16	Well Line	Produced Water	16-01	No	No
525	FS2	DS16	Well Line	Produced Water	16-02	No	No
526	FS2	DS16	Well Line	Produced Water	16-03	No	No
527	FS2	DS16	Well Line	Oil	16-04	No	No
528	FS2	DS16	Well Line	Produced Water	16-05	No	No
529	FS2	DS16	Well Line	Oil	16-06	No	No
530	FS2	DS16	Well Line	Oil	16-07	No	No
531	FS2	DS16	Well Line	Oil	16-08	No	No
532	FS2	DS16	Well Line	Oil	16-09	No	No

APPENDIX A: Prudhoe Bay Unit - Pipeline System

Item	Facility	Location	Type	Service	Equipment ID / Well	ILI Piggable	Maint. Piggable
533	FS2	DS16	Well Line	Produced Water	16-10	No	No
534	FS2	DS16	Well Line	Produced Water	16-11	No	No
535	FS2	DS16	Well Line	Oil	16-12	No	No
536	FS2	DS16	Well Line	Oil	16-13	No	No
537	FS2	DS16	Well Line	Produced Water	16-14	No	No
538	FS2	DS16	Well Line	Oil	16-15	No	No
539	FS2	DS16	Well Line	Produced Water	16-16	No	No
540	FS2	DS16	Well Line	Oil	16-17	No	No
541	FS2	DS16	Well Line	Oil	16-18	No	No
542	FS2	DS16	Well Line	Oil	16-19	No	No
543	FS2	DS16	Well Line	Oil	16-20	No	No
544	FS2	DS16	Well Line	Oil	16-21	No	No
545	FS2	DS16	Well Line	Oil	16-22	No	No
546	FS2	DS16	Well Line	Oil	16-23	No	No
547	FS2	DS16	Well Line	Oil	16-24	No	No
548	FS2	DS16	Well Line	Oil	16-25	No	No
549	FS2	DS16	Well Line	Oil	16-26	No	No
550	FS2	DS16	Well Line	Oil	16-27	No	No
551	FS2	DS16	Well Line	Oil	16-28	No	No
552	FS2	DS16	Well Line	Oil	16-29	No	No
553	FS2	DS16	Well Line	Oil	16-30	No	No
554	FS2	DS16	Well Line	Oil	16-31	No	No
555	FS2	DS16	Flow Line	Oil	16D	Yes	No
556	FS2	DS16	Flow Line	Produced Water	16-SWI	Yes	Yes
557	FS2	DS17	Well Line	Oil	17-01	No	No
558	FS2	DS17	Well Line	Oil	17-02	No	No
559	FS2	DS17	Well Line	Oil	17-03	No	No
560	FS2	DS17	Well Line	Oil	17-04	No	No
561	FS2	DS17	Well Line	Oil	17-05	No	No
562	FS2	DS17	Well Line	Produced Water	17-06	No	No
563	FS2	DS17	Well Line	Oil	17-07	No	No
564	FS2	DS17	Well Line	Produced Water	17-08	No	No
565	FS2	DS17	Well Line	Oil	17-09	No	No
566	FS2	DS17	Well Line	Produced Water	17-10	No	No
567	FS2	DS17	Well Line	Oil	17-11	No	No
568	FS2	DS17	Well Line	Oil	17-12	No	No
569	FS2	DS17	Well Line	Oil	17-14	No	No
570	FS2	DS17	Well Line	Produced Water	17-15	No	No

APPENDIX A: Prudhoe Bay Unit - Pipeline System

Item	Facility	Location	Type	Service	Equipment ID / Well	ILI Piggable	Maint. Piggable
571	FS2	DS17	Well Line	Oil	17-16	No	No
572	FS2	DS17	Well Line	Oil	17-19	No	No
573	FS2	DS17	Well Line	Oil	17-20	No	No
574	FS2	DS17	Well Line	Oil	17-21	No	No
575	FS2	DS17	Well Line	Oil	17-22	No	No
576	FS2	DS17	Flow Line	Oil	17D	Yes	No
577	FS2	DS17	Flow Line	Produced Water	17-SWI	Yes	Yes
578	FS1	DS18	Well Line	Oil	18-01	No	No
579	FS1	DS18	Well Line	Oil	18-02	No	No
580	FS1	DS18	Well Line	Oil	18-03	No	No
581	FS1	DS18	Well Line	Oil	18-04	No	No
582	FS1	DS18	Well Line	Oil	18-05	No	No
583	FS1	DS18	Well Line	Oil	18-06	No	No
584	FS1	DS18	Well Line	Oil	18-07	No	No
585	FS1	DS18	Well Line	Oil	18-08	No	No
586	FS1	DS18	Well Line	Oil	18-09	No	No
587	FS1	DS18	Well Line	Oil	18-10	No	No
588	FS1	DS18	Well Line	Oil	18-11	No	No
589	FS1	DS18	Well Line	Oil	18-12	No	No
590	FS1	DS18	Well Line	Oil	18-13	No	No
591	FS1	DS18	Well Line	Oil	18-14	No	No
592	FS1	DS18	Well Line	Oil	18-15	No	No
593	FS1	DS18	Well Line	Oil	18-16	No	No
594	FS1	DS18	Well Line	Oil	18-17	No	No
595	FS1	DS18	Well Line	Oil	18-18	No	No
596	FS1	DS18	Well Line	Oil	18-19	No	No
597	FS1	DS18	Well Line	Oil	18-20	No	No
598	FS1	DS18	Well Line	Oil	18-21	No	No
599	FS1	DS18	Well Line	Oil	18-22	No	No
600	FS1	DS18	Well Line	Oil	18-23	No	No
601	FS1	DS18	Well Line	Oil	18-24	No	No
602	FS1	DS18	Well Line	Oil	18-25	No	No
603	FS1	DS18	Well Line	Oil	18-26	No	No
604	FS1	DS18	Well Line	Oil	18-27	No	No
605	FS1	DS18	Well Line	Oil	18-28	No	No
606	FS1	DS18	Well Line	Oil	18-29	No	No
607	FS1	DS18	Well Line	Oil	18-30	No	No
608	FS1	DS18	Well Line	Oil	18-31	No	No

APPENDIX A: Prudhoe Bay Unit - Pipeline System

Item	Facility	Location	Type	Service	Equipment ID / Well	ILI Piggable	Maint. Piggable
609	FS1	DS18	Well Line	Oil	18-32	No	No
610	FS1	DS18	Well Line	Oil	18-33	No	No
611	FS1	DS18	Well Line	Oil	18-34	No	No
612	FS1	DS18	Flow Line	Oil	18B	No	No
613	FS1	DS18	Flow Line	Oil	18D	No	No
614	GC3	A Pad	Well Line	Oil	A-01	No	No
615	GC3	A Pad	Well Line	Oil	A-02	No	No
616	GC3	A Pad	Well Line	Produced Water	A-03	No	No
617	GC3	A Pad	Well Line	Oil	A-04	No	No
618	GC3	A Pad	Well Line	Produced Water	A-05	No	No
619	GC3	A Pad	Well Line	Oil	A-06	No	No
620	GC3	A Pad	Well Line	Oil	A-07	No	No
621	GC3	A Pad	Well Line	Produced Water	A-08	No	No
622	GC3	A Pad	Well Line	Oil	A-09	No	No
623	GC3	A Pad	Well Line	Oil	A-10	No	No
624	GC3	A Pad	Well Line	Produced Water	A-11	No	No
625	GC3	A Pad	Well Line	Oil	A-12	No	No
626	GC3	A Pad	Well Line	Oil	A-13	No	No
627	GC3	A Pad	Well Line	Oil	A-14	No	No
628	GC3	A Pad	Well Line	Oil	A-15	No	No
629	GC3	A Pad	Well Line	Produced Water	A-16	No	No
630	GC3	A Pad	Well Line	Produced Water	A-17	No	No
631	GC3	A Pad	Well Line	Oil	A-18	No	No
632	GC3	A Pad	Well Line	Oil	A-19	No	No
633	GC3	A Pad	Well Line	Oil	A-20	No	No
634	GC3	A Pad	Well Line	Produced Water	A-21	No	No
635	GC3	A Pad	Well Line	Oil	A-22	No	No
636	GC3	A Pad	Well Line	Oil	A-23	No	No
637	GC3	A Pad	Well Line	Oil	A-24	No	No
638	GC3	A Pad	Well Line	Oil	A-25	No	No
639	GC3	A Pad	Well Line	Oil	A-26	No	No
640	GC3	A Pad	Well Line	Produced Water	A-27	No	No
641	GC3	A Pad	Well Line	Oil	A-28	No	No
642	GC3	A Pad	Well Line	Oil	A-29	No	No
643	GC3	A Pad	Well Line	Oil	A-30	No	No
644	GC3	A Pad	Well Line	Produced Water	A-31	No	No
645	GC3	A Pad	Well Line	Oil	A-32	No	No
646	GC3	A Pad	Well Line	Oil	A-33	No	No

APPENDIX A: Prudhoe Bay Unit - Pipeline System

Item	Facility	Location	Type	Service	Equipment ID / Well	ILI Piggable	Maint. Piggable
647	GC3	A Pad	Well Line	Oil	A-34	No	No
648	GC3	A Pad	Well Line	Produced Water	A-35	No	No
649	GC3	A Pad	Well Line	Oil	A-37	No	No
650	GC3	A Pad	Well Line	Oil	A-38	No	No
651	GC3	A Pad	Well Line	Oil	A-39	No	No
652	GC3	A Pad	Well Line	Oil	A-40	No	No
653	GC3	A Pad	Well Line	Oil	A-41	No	No
654	GC3	A Pad	Well Line	Oil	A-42	No	No
655	GC3	A Pad	Well Line	Oil	A-43	No	No
656	GC3	A Pad	Well Line	Produced Water	A-44	No	No
657	GC3	A Pad	Flow Line	Produced Water	A-41	Yes	Yes
658	GC3	A Pad	Flow Line	Produced Water	A-42	Yes	Yes
659	GC3	A Pad	Flow Line	Produced Water	A-43	Yes	Yes
660	GC3	A Pad	Flow Line	Produced Water	A-44	Yes	Yes
661	GC3	A Pad	Flow Line	Oil	A-45	No	No
662	GC3	A Pad	Flow Line	Oil	A-49	No	No
663	GC3	A Pad	Flow Line	Oil	A-74	Yes	Yes
664	GC3	B Pad	Well Line	Oil	B-01	No	No
665	GC3	B Pad	Well Line	Oil	B-02	No	No
666	GC3	B Pad	Well Line	Oil	B-03	No	No
667	GC3	B Pad	Well Line	Oil	B-04	No	No
668	GC3	B Pad	Well Line	Oil	B-05	No	No
669	GC3	B Pad	Well Line	Oil	B-06	No	No
670	GC3	B Pad	Well Line	Oil	B-07	No	No
671	GC3	B Pad	Well Line	Oil	B-08	No	No
672	GC3	B Pad	Well Line	Produced Water	B-09	No	No
673	GC3	B Pad	Well Line	Oil	B-10	No	No
674	GC3	B Pad	Well Line	Oil	B-11	No	No
675	GC3	B Pad	Well Line	Oil	B-12	No	No
676	GC3	B Pad	Well Line	Produced Water	B-13	No	No
677	GC3	B Pad	Well Line	Oil	B-14	No	No
678	GC3	B Pad	Well Line	Produced Water	B-15	No	No
679	GC3	B Pad	Well Line	Oil	B-16	No	No
680	GC3	B Pad	Well Line	Produced Water	B-17	No	No
681	GC3	B Pad	Well Line	Oil	B-18	No	No
682	GC3	B Pad	Well Line	Oil	B-19	No	No
683	GC3	B Pad	Well Line	Oil	B-20	No	No
684	GC3	B Pad	Well Line	Oil	B-21	No	No

APPENDIX A: Prudhoe Bay Unit - Pipeline System

Item	Facility	Location	Type	Service	Equipment ID / Well	ILI Piggable	Maint. Piggable
685	GC3	B Pad	Well Line	Produced Water	B-22	No	No
686	GC3	B Pad	Well Line	Oil	B-23	No	No
687	GC3	B Pad	Well Line	Oil	B-24	No	No
688	GC3	B Pad	Well Line	Oil	B-25	No	No
689	GC3	B Pad	Well Line	Oil	B-26	No	No
690	GC3	B Pad	Well Line	Oil	B-27	No	No
691	GC3	B Pad	Well Line	Produced Water	B-28	No	No
692	GC3	B Pad	Well Line	Oil	B-29	No	No
693	GC3	B Pad	Well Line	Oil	B-30	No	No
694	GC3	B Pad	Well Line	Produced Water	B-31	No	No
695	GC3	B Pad	Well Line	Produced Water	B-32	No	No
696	GC3	B Pad	Well Line	Oil	B-33	No	No
697	GC3	B Pad	Well Line	Produced Water	B-34	No	No
698	GC3	B Pad	Well Line	Oil	B-35	No	No
699	GC3	B Pad	Well Line	Oil	B-36	No	No
700	GC3	B Pad	Well Line	Oil	B-37	No	No
701	GC3	B Pad	Flow Line	Oil	B-36	Yes	Yes
702	GC3	B Pad	Flow Line	Oil	B-81	No	No
703	GC3	B Pad	Flow Line	Oil	B-82	No	No
704	GC3	B Pad	Flow Line	Oil	B-83	No	No
705	GC3	B Pad	Flow Line	Oil	B-84	No	No
706	GC3	B Pad	Flow Line	Oil	B-86	No	No
707	GC3	B Pad	Flow Line	Oil	B-87	No	No
708	GC3	B Pad	Flow Line	Produced Water	B-91	Yes	Yes
709	GC3	B Pad	Flow Line	Oil	B-95	No	No
710	GC3	B Pad	Flow Line	Oil	B-96	No	No
711	GC3	B Pad	Flow Line	Produced Water	B-97	Yes	Yes
712	GC3	C Pad	Well Line	Oil	C-01	No	No
713	GC3	C Pad	Well Line	Oil	C-02	No	No
714	GC3	C Pad	Well Line	Oil	C-03	No	No
715	GC3	C Pad	Well Line	Oil	C-04	No	No
716	GC3	C Pad	Well Line	Oil	C-05	No	No
717	GC3	C Pad	Well Line	Oil	C-06	No	No
718	GC3	C Pad	Well Line	Oil	C-07	No	No
719	GC3	C Pad	Well Line	Oil	C-08	No	No
720	GC3	C Pad	Well Line	Oil	C-09	No	No
721	GC3	C Pad	Well Line	Oil	C-10	No	No
722	GC3	C Pad	Well Line	Oil	C-11	No	No

APPENDIX A: Prudhoe Bay Unit - Pipeline System

Item	Facility	Location	Type	Service	Equipment ID / Well	ILI Piggable	Maint. Piggable
723	GC3	C Pad	Well Line	Oil	C-12	No	No
724	GC3	C Pad	Well Line	Oil	C-13	No	No
725	GC3	C Pad	Well Line	Oil	C-15	No	No
726	GC3	C Pad	Well Line	Oil	C-16	No	No
727	GC3	C Pad	Well Line	Oil	C-17	No	No
728	GC3	C Pad	Well Line	Oil	C-18	No	No
729	GC3	C Pad	Well Line	Oil	C-19	No	No
730	GC3	C Pad	Well Line	Oil	C-20	No	No
731	GC3	C Pad	Well Line	Oil	C-21	No	No
732	GC3	C Pad	Well Line	Oil	C-22	No	No
733	GC3	C Pad	Well Line	Oil	C-23	No	No
734	GC3	C Pad	Well Line	Oil	C-24	No	No
735	GC3	C Pad	Well Line	Oil	C-25	No	No
736	GC3	C Pad	Well Line	Oil	C-26	No	No
737	GC3	C Pad	Well Line	Oil	C-27	No	No
738	GC3	C Pad	Well Line	Oil	C-28	No	No
739	GC3	C Pad	Well Line	Oil	C-29	No	No
740	GC3	C Pad	Well Line	Oil	C-30	No	No
741	GC3	C Pad	Well Line	Oil	C-31	No	No
742	GC3	C Pad	Well Line	Oil	C-32	No	No
743	GC3	C Pad	Well Line	Oil	C-33	No	No
744	GC3	C Pad	Well Line	Oil	C-34	No	No
745	GC3	C Pad	Well Line	Oil	C-35	No	No
746	GC3	C Pad	Well Line	Oil	C-36	No	No
747	GC3	C Pad	Well Line	Oil	C-37	No	No
748	GC3	C Pad	Well Line	Oil	C-38	No	No
749	GC3	C Pad	Well Line	Oil	C-39	No	No
750	GC3	C Pad	Well Line	Oil	C-41	No	No
751	GC3	C Pad	Well Line	Oil	C-42	No	No
752	GC3	C Pad	Flow Line	Oil	C-36	No	No
753	GC3	C Pad	Flow Line	Oil	C-81	No	No
754	GC3	C Pad	Flow Line	Oil	C-82	No	No
755	GC3	C Pad	Flow Line	Oil	C-83	No	No
756	GC3	C Pad	Flow Line	Oil	C-84	No	No
757	GC3	C Pad	Flow Line	Oil	C-85	No	No
758	GC3	C Pad	Flow Line	Oil	C-86	No	No
759	GC3	C Pad	Flow Line	Oil	C-87	No	No
760	GC3	C Pad	Flow Line	Oil	C-88	No	No

APPENDIX A: Prudhoe Bay Unit - Pipeline System

Item	Facility	Location	Type	Service	Equipment ID / Well	ILI Piggable	Maint. Piggable
761	GC3	C Pad	Flow Line	Oil	C-89	No	No
762	GC3	C Pad	Flow Line	Oil	C-90	No	No
763	GC3	C Pad	Flow Line	Oil	C-91	No	No
764	GC3	C Pad	Flow Line	Oil	C-92	No	No
765	GC3	C Pad	Flow Line	Oil	C-94	No	No
766	GC3	C Pad	Flow Line	Oil	C-95	No	No
767	GC3	C Pad	Flow Line	Oil	C-96	No	No
768	GC3	C Pad	Flow Line	Oil	C-97	No	No
769	GC1	D Pad	Well Line	Oil	D-01	No	No
770	GC1	D Pad	Well Line	Oil	D-03	No	No
771	GC1	D Pad	Well Line	Oil	D-04	No	No
772	GC1	D Pad	Well Line	Oil	D-05	No	No
773	GC1	D Pad	Well Line	Oil	D-06	No	No
774	GC1	D Pad	Well Line	Oil	D-07	No	No
775	GC1	D Pad	Well Line	Oil	D-08	No	No
776	GC1	D Pad	Well Line	Oil	D-09	No	No
777	GC1	D Pad	Well Line	Oil	D-10	No	No
778	GC1	D Pad	Well Line	Oil	D-11	No	No
779	GC1	D Pad	Well Line	Oil	D-12	No	No
780	GC1	D Pad	Well Line	Oil	D-13	No	No
781	GC1	D Pad	Well Line	Oil	D-14	No	No
782	GC1	D Pad	Well Line	Oil	D-15	No	No
783	GC1	D Pad	Well Line	Oil	D-16	No	No
784	GC1	D Pad	Well Line	Oil	D-17	No	No
785	GC1	D Pad	Well Line	Oil	D-18	No	No
786	GC1	D Pad	Well Line	Oil	D-19	No	No
787	GC1	D Pad	Well Line	Oil	D-20	No	No
788	GC1	D Pad	Well Line	Oil	D-21	No	No
789	GC1	D Pad	Well Line	Oil	D-22	No	No
790	GC1	D Pad	Well Line	Oil	D-23	No	No
791	GC1	D Pad	Well Line	Oil	D-24	No	No
792	GC1	D Pad	Well Line	Oil	D-25	No	No
793	GC1	D Pad	Well Line	Oil	D-26	No	No
794	GC1	D Pad	Well Line	Oil	D-27	No	No
795	GC1	D Pad	Well Line	Oil	D-28	No	No
796	GC1	D Pad	Well Line	Oil	D-29	No	No
797	GC1	D Pad	Well Line	Oil	D-30	No	No
798	GC1	D Pad	Well Line	Oil	D-31	No	No

APPENDIX A: Prudhoe Bay Unit - Pipeline System

Item	Facility	Location	Type	Service	Equipment ID / Well	ILI Piggable	Maint. Piggable
799	GC1	D Pad	Well Line	Oil	D-33	No	No
800	GC1	D Pad	Flow Line	Oil	D-36	Yes	Yes
801	GC1	D Pad	Flow Line	Oil	D-81	No	No
802	GC1	D Pad	Flow Line	Oil	D-82	No	No
803	GC1	D Pad	Flow Line	Oil	D-86	No	No
804	GC1	D Pad	Flow Line	Oil	D-87	No	No
805	GC1	D Pad	Flow Line	Oil	D-93	No	No
806	GC1	D Pad	Flow Line	Oil	D-94	No	No
807	GC1	D Pad	Flow Line	Oil	D-95	No	No
808	GC1	D Pad	Flow Line	Oil	D-97	No	No
809	GC1	E Pad	Well Line	Oil	E-01	No	No
810	GC1	E Pad	Well Line	Oil	E-02	No	No
811	GC1	E Pad	Well Line	Oil	E-03	No	No
812	GC1	E Pad	Well Line	Oil	E-04	No	No
813	GC1	E Pad	Well Line	Oil	E-05	No	No
814	GC1	E Pad	Well Line	Oil	E-06	No	No
815	GC1	E Pad	Well Line	Oil	E-07	No	No
816	GC1	E Pad	Well Line	Oil	E-08	No	No
817	GC1	E Pad	Well Line	Oil	E-09	No	No
818	GC1	E Pad	Well Line	Oil	E-10	No	No
819	GC1	E Pad	Well Line	Oil	E-11	No	No
820	GC1	E Pad	Well Line	Oil	E-12	No	No
821	GC1	E Pad	Well Line	Oil	E-13	No	No
822	GC1	E Pad	Well Line	Oil	E-14	No	No
823	GC1	E Pad	Well Line	Oil	E-15	No	No
824	GC1	E Pad	Well Line	Oil	E-16	No	No
825	GC1	E Pad	Well Line	Oil	E-17	No	No
826	GC1	E Pad	Well Line	Oil	E-19	No	No
827	GC1	E Pad	Well Line	Oil	E-20	No	No
828	GC1	E Pad	Well Line	Oil	E-21	No	No
829	GC1	E Pad	Well Line	Oil	E-23	No	No
830	GC1	E Pad	Well Line	Oil	E-24	No	No
831	GC1	E Pad	Well Line	Oil	E-25	No	No
832	GC1	E Pad	Well Line	Oil	E-26	No	No
833	GC1	E Pad	Well Line	Oil	E-27	No	No
834	GC1	E Pad	Well Line	Oil	E-28	No	No
835	GC1	E Pad	Well Line	Oil	E-29	No	No
836	GC1	E Pad	Well Line	Oil	E-31	No	No

APPENDIX A: Prudhoe Bay Unit - Pipeline System

Item	Facility	Location	Type	Service	Equipment ID / Well	ILI Piggable	Maint. Piggable
837	GC1	E Pad	Well Line	Oil	E-32	No	No
838	GC1	E Pad	Well Line	Oil	E-33	No	No
839	GC1	E Pad	Well Line	Oil	E-34	No	No
840	GC1	E Pad	Well Line	Oil	E-35	No	No
841	GC1	E Pad	Well Line	Oil	E-36	No	No
842	GC1	E Pad	Well Line	Oil	E-37	No	No
843	GC1	E Pad	Well Line	Oil	E-38	No	No
844	GC1	E Pad	Well Line	Oil	E-39	No	No
845	GC1	E Pad	Well Line	Produced Water	E-100	No	No
846	GC1	E Pad	Well Line	Oil	E-101	No	No
847	GC1	E Pad	Well Line	Oil	E-102	No	No
848	GC1	E Pad	Well Line	Produced Water	E-103	No	No
849	GC1	E Pad	Well Line	Produced Water	E-104	No	No
850	GC1	E Pad	Flow Line	Oil	E-36	Yes	Yes
851	GC1	E Pad	Flow Line	Oil	E-41	No	No
852	GC1	E Pad	Flow Line	Oil	E-42	No	No
853	GC1	E Pad	Flow Line	Produced Water	E-43	Yes	Yes
854	GC1	E Pad	Flow Line	Oil	E-44	No	No
855	GC1	E Pad	Flow Line	Oil	E-45	No	No
856	GC1	E Pad	Flow Line	Oil	E-46	No	No
857	GC1	E Pad	Flow Line	Oil	E-47	No	No
858	GC1	F Pad	Well Line	Oil	F-01	No	No
859	GC1	F Pad	Well Line	Oil	F-02	No	No
860	GC1	F Pad	Well Line	Oil	F-03	No	No
861	GC1	F Pad	Well Line	Oil	F-04	No	No
862	GC1	F Pad	Well Line	Oil	F-05	No	No
863	GC1	F Pad	Well Line	Oil	F-06	No	No
864	GC1	F Pad	Well Line	Oil	F-07	No	No
865	GC1	F Pad	Well Line	Oil	F-08	No	No
866	GC1	F Pad	Well Line	Oil	F-09	No	No
867	GC1	F Pad	Well Line	Oil	F-10	No	No
868	GC1	F Pad	Well Line	Oil	F-11	No	No
869	GC1	F Pad	Well Line	Oil	F-12	No	No
870	GC1	F Pad	Well Line	Oil	F-13	No	No
871	GC1	F Pad	Well Line	Oil	F-14	No	No
872	GC1	F Pad	Well Line	Oil	F-15	No	No
873	GC1	F Pad	Well Line	Oil	F-16	No	No
874	GC1	F Pad	Well Line	Oil	F-17	No	No

APPENDIX A: Prudhoe Bay Unit - Pipeline System

Item	Facility	Location	Type	Service	Equipment ID / Well	ILI Piggable	Maint. Piggable
875	GC1	F Pad	Well Line	Oil	F-18	No	No
876	GC1	F Pad	Well Line	Oil	F-19	No	No
877	GC1	F Pad	Well Line	Oil	F-21	No	No
878	GC1	F Pad	Well Line	Oil	F-22	No	No
879	GC1	F Pad	Well Line	Oil	F-23	No	No
880	GC1	F Pad	Well Line	Oil	F-24	No	No
881	GC1	F Pad	Well Line	Oil	F-26	No	No
882	GC1	F Pad	Well Line	Oil	F-27	No	No
883	GC1	F Pad	Well Line	Oil	F-28	No	No
884	GC1	F Pad	Well Line	Oil	F-29	No	No
885	GC1	F Pad	Well Line	Oil	F-30	No	No
886	GC1	F Pad	Well Line	Oil	F-31	No	No
887	GC1	F Pad	Well Line	Oil	F-32	No	No
888	GC1	F Pad	Well Line	Oil	F-33	No	No
889	GC1	F Pad	Well Line	Oil	F-34	No	No
890	GC1	F Pad	Well Line	Oil	F-35	No	No
891	GC1	F Pad	Well Line	Oil	F-36	No	No
892	GC1	F Pad	Well Line	Oil	F-37	No	No
893	GC1	F Pad	Well Line	Oil	F-38	No	No
894	GC1	F Pad	Well Line	Oil	F-39	No	No
895	GC1	F Pad	Well Line	Oil	F-40	No	No
896	GC1	F Pad	Well Line	Oil	F-41	No	No
897	GC1	F Pad	Well Line	Oil	F-42	No	No
898	GC1	F Pad	Well Line	Oil	F-43	No	No
899	GC1	F Pad	Well Line	Oil	F-44	No	No
900	GC1	F Pad	Well Line	Oil	F-45	No	No
901	GC1	F Pad	Well Line	Oil	F-46	No	No
902	GC1	F Pad	Well Line	Oil	F-47	No	No
903	GC1	F Pad	Well Line	Oil	F-48	No	No
904	GC1	F Pad	Flow Line	Oil	F-42	No	No
905	GC1	F Pad	Flow Line	Oil	F-43	No	No
906	GC1	F Pad	Flow Line	Oil	F-44	No	No
907	GC1	F Pad	Flow Line	Oil	F-45	No	No
908	GC1	F Pad	Flow Line	Oil	F-46	No	No
909	GC1	F Pad	Flow Line	Oil	F-47	No	No
910	GC1	F Pad	Flow Line	Oil	F-48	No	No
911	GC1	F Pad	Flow Line	Oil	F-49	Yes	No
912	GC1	F Pad	Flow Line	Oil	F-74	Yes	Yes

APPENDIX A: Prudhoe Bay Unit - Pipeline System

Item	Facility	Location	Type	Service	Equipment ID / Well	ILI Piggable	Maint. Piggable
913	GC1	G Pad	Well Line	Oil	G-01	No	No
914	GC1	G Pad	Well Line	Oil	G-02	No	No
915	GC1	G Pad	Well Line	Oil	G-03	No	No
916	GC1	G Pad	Well Line	Oil	G-04	No	No
917	GC1	G Pad	Well Line	Oil	G-05	No	No
918	GC1	G Pad	Well Line	Oil	G-06	No	No
919	GC1	G Pad	Well Line	Oil	G-07	No	No
920	GC1	G Pad	Well Line	Oil	G-08	No	No
921	GC1	G Pad	Well Line	Oil	G-09	No	No
922	GC1	G Pad	Well Line	Oil	G-10	No	No
923	GC1	G Pad	Well Line	Oil	G-11	No	No
924	GC1	G Pad	Well Line	Oil	G-12	No	No
925	GC1	G Pad	Well Line	Oil	G-13	No	No
926	GC1	G Pad	Well Line	Oil	G-14	No	No
927	GC1	G Pad	Well Line	Oil	G-15	No	No
928	GC1	G Pad	Well Line	Oil	G-16	No	No
929	GC1	G Pad	Well Line	Oil	G-17	No	No
930	GC1	G Pad	Well Line	Oil	G-18	No	No
931	GC1	G Pad	Well Line	Oil	G-19	No	No
932	GC1	G Pad	Well Line	Oil	G-21	No	No
933	GC1	G Pad	Well Line	Oil	G-23	No	No
934	GC1	G Pad	Well Line	Oil	G-24	No	No
935	GC1	G Pad	Well Line	Oil	G-25	No	No
936	GC1	G Pad	Well Line	Oil	G-26	No	No
937	GC1	G Pad	Well Line	Oil	G-27	No	No
938	GC1	G Pad	Well Line	Oil	G-29	No	No
939	GC1	G Pad	Well Line	Oil	G-30	No	No
940	GC1	G Pad	Well Line	Oil	G-31	No	No
941	GC1	G Pad	Well Line	Oil	G-32	No	No
942	GC1	G Pad	Flow Line	Oil	G-42	No	No
943	GC1	G Pad	Flow Line	Oil	G-43	No	No
944	GC1	G Pad	Flow Line	Oil	G-44	No	No
945	GC1	G Pad	Flow Line	Oil	G-45	No	No
946	GC1	G Pad	Flow Line	Oil	G-47	No	No
947	GC1	G Pad	Flow Line	Oil	G-74	No	No
948	GC1	E Pad	Flow Line	Oil	GHX-E	No	No
949	GC1	G Pad	Flow Line	Oil	GHX-G	No	No
950	GC2	J Pad	Flow Line	Oil	GHX-J	No	No

APPENDIX A: Prudhoe Bay Unit - Pipeline System

Item	Facility	Location	Type	Service	Equipment ID / Well	ILI Piggable	Maint. Piggable
951	GC2	H Pad	Well Line	Oil	H-01	No	No
952	GC2	H Pad	Well Line	Oil	H-02	No	No
953	GC2	H Pad	Well Line	Produced Water	H-03	No	No
954	GC2	H Pad	Well Line	Oil	H-04	No	No
955	GC2	H Pad	Well Line	Oil	H-05	No	No
956	GC2	H Pad	Well Line	Oil	H-06	No	No
957	GC2	H Pad	Well Line	Oil	H-07	No	No
958	GC2	H Pad	Well Line	Oil	H-08	No	No
959	GC2	H Pad	Well Line	Produced Water	H-09	No	No
960	GC2	H Pad	Well Line	Oil	H-10	No	No
961	GC2	H Pad	Well Line	Oil	H-11	No	No
962	GC2	H Pad	Well Line	Oil	H-12	No	No
963	GC2	H Pad	Well Line	Oil	H-13	No	No
964	GC2	H Pad	Well Line	Oil	H-14	No	No
965	GC2	H Pad	Well Line	Oil	H-15	No	No
966	GC2	H Pad	Well Line	Oil	H-16	No	No
967	GC2	H Pad	Well Line	Oil	H-17	No	No
968	GC2	H Pad	Well Line	Oil	H-18	No	No
969	GC2	H Pad	Well Line	Oil	H-19	No	No
970	GC2	H Pad	Well Line	Oil	H-20	No	No
971	GC2	H Pad	Well Line	Oil	H-21	No	No
972	GC2	H Pad	Well Line	Oil	H-22	No	No
973	GC2	H Pad	Well Line	Oil	H-23	No	No
974	GC2	H Pad	Well Line	Oil	H-24	No	No
975	GC2	H Pad	Well Line	Oil	H-25	No	No
976	GC2	H Pad	Well Line	Oil	H-26	No	No
977	GC2	H Pad	Well Line	Oil	H-27	No	No
978	GC2	H Pad	Well Line	Oil	H-28	No	No
979	GC2	H Pad	Well Line	Oil	H-29	No	No
980	GC2	H Pad	Well Line	Oil	H-30	No	No
981	GC2	H Pad	Well Line	Produced Water	H-31	No	No
982	GC2	H Pad	Well Line	Oil	H-32	No	No
983	GC2	H Pad	Well Line	Oil	H-33	No	No
984	GC2	H Pad	Well Line	Oil	H-34	No	No
985	GC2	H Pad	Well Line	Oil	H-35	No	No
986	GC2	H Pad	Well Line	Oil	H-36	No	No
987	GC2	H Pad	Well Line	Oil	H-37	No	No
988	GC2	H Pad	Well Line	Oil	H-38	No	No

APPENDIX A: Prudhoe Bay Unit - Pipeline System

Item	Facility	Location	Type	Service	Equipment ID / Well	ILI Piggable	Maint. Piggable
989	GC2	H Pad	Flow Line	Oil	H-42	No	No
990	GC2	H Pad	Flow Line	Oil	H-43	No	No
991	GC2	H Pad	Flow Line	Oil	H-44	No	No
992	GC2	H Pad	Flow Line	Oil	H-45	No	No
993	GC2	H Pad	Flow Line	Oil	H-46	No	No
994	GC2	H Pad	Flow Line	Oil	H-47	No	No
995	GC2	H Pad	Flow Line	Produced Water	H-69	No	No
996	GC2	H Pad	Flow Line	Oil	H-74	Yes	Yes
997	GC2	J Pad	Well Line	Oil	J-01	No	No
998	GC2	J Pad	Well Line	Oil	J-02	No	No
999	GC2	J Pad	Well Line	Oil	J-03	No	No
1000	GC2	J Pad	Well Line	Oil	J-04	No	No
1001	GC2	J Pad	Well Line	Oil	J-05	No	No
1002	GC2	J Pad	Well Line	Oil	J-06	No	No
1003	GC2	J Pad	Well Line	Oil	J-07	No	No
1004	GC2	J Pad	Well Line	Oil	J-08	No	No
1005	GC2	J Pad	Well Line	Oil	J-09	No	No
1006	GC2	J Pad	Well Line	Oil	J-10	No	No
1007	GC2	J Pad	Well Line	Oil	J-11	No	No
1008	GC2	J Pad	Well Line	Oil	J-12	No	No
1009	GC2	J Pad	Well Line	Oil	J-13	No	No
1010	GC2	J Pad	Well Line	Oil	J-14	No	No
1011	GC2	J Pad	Well Line	Oil	J-15	No	No
1012	GC2	J Pad	Well Line	Oil	J-16	No	No
1013	GC2	J Pad	Well Line	Oil	J-17	No	No
1014	GC2	J Pad	Well Line	Oil	J-18	No	No
1015	GC2	J Pad	Well Line	Oil	J-19	No	No
1016	GC2	J Pad	Well Line	Oil	J-20	No	No
1017	GC2	J Pad	Well Line	Oil	J-21	No	No
1018	GC2	J Pad	Well Line	Oil	J-22	No	No
1019	GC2	J Pad	Well Line	Oil	J-23	No	No
1020	GC2	J Pad	Well Line	Oil	J-24	No	No
1021	GC2	J Pad	Well Line	Oil	J-25	No	No
1022	GC2	J Pad	Well Line	Oil	J-26	No	No
1023	GC2	J Pad	Well Line	Oil	J-27	No	No
1024	GC2	J Pad	Well Line	Oil	J-28	No	No
1025	GC2	J Pad	Well Line	Oil	JX-02	No	No
1026	GC2	J Pad	Flow Line	Oil	J-41	No	No

APPENDIX A: Prudhoe Bay Unit - Pipeline System

Item	Facility	Location	Type	Service	Equipment ID / Well	ILI Piggable	Maint. Piggable
1027	GC2	J Pad	Flow Line	Oil	J-42	No	No
1028	GC2	J Pad	Flow Line	Oil	J-44	No	No
1029	GC2	J Pad	Flow Line	Oil	J-45	No	No
1030	GC2	J Pad	Flow Line	Oil	J-46	No	No
1031	GC2	J Pad	Flow Line	Oil	J-47	No	No
1032	GC2	J Pad	Flow Line	Oil	J-48	No	No
1033	GC2	J Pad	Flow Line	Oil	J-74	Yes	Yes
1034	GC1	K Pad	Well Line	Oil	K-01	No	No
1035	GC1	K Pad	Well Line	Oil	K-02	No	No
1036	GC1	K Pad	Well Line	Oil	K-03	No	No
1037	GC1	K Pad	Well Line	Oil	K-04	No	No
1038	GC1	K Pad	Well Line	Oil	K-05	No	No
1039	GC1	K Pad	Well Line	Oil	K-06	No	No
1040	GC1	K Pad	Well Line	Oil	K-07	No	No
1041	GC1	K Pad	Well Line	Oil	K-08	No	No
1042	GC1	K Pad	Well Line	Oil	K-09	No	No
1043	GC1	K Pad	Well Line	Oil	K-11	No	No
1044	GC1	K Pad	Well Line	Oil	K-12	No	No
1045	GC1	K Pad	Well Line	Oil	K-13	No	No
1046	GC1	K Pad	Well Line	Oil	K-14	No	No
1047	GC1	K Pad	Well Line	Oil	K-16	No	No
1048	GC1	K Pad	Well Line	Oil	K-19	No	No
1049	GC1	K Pad	Well Line	Oil	K-20	No	No
1050	GC1	K Pad	Well Line	Oil	K-317	No	No
1051	GC1	K Pad	Flow Line	Oil	K-36	No	No
1052	GC1	K Pad	Flow Line	Oil	K-74	Yes	No
1053	GC2	L Pad	Well Line	Oil	L-01	No	No
1054	GC2	L Pad	Well Line	Oil	L-02	No	No
1055	GC2	L Pad	Well Line	Oil	L-03	No	No
1056	GC2	L Pad	Well Line	Produced Water	L-04	No	No
1057	GC2	L Pad	Well Line	Oil	L-50	No	No
1058	GC2	L Pad	Well Line	Oil	L-51	No	No
1059	GC2	L Pad	Well Line	Oil	L-100	No	No
1060	GC2	L Pad	Well Line	Oil	L-101	No	No
1061	GC2	L Pad	Well Line	Oil	L-102	No	No
1062	GC2	L Pad	Well Line	Produced Water	L-103	No	No
1063	GC2	L Pad	Well Line	Oil	L-104	No	No
1064	GC2	L Pad	Well Line	Produced Water	L-105	No	No

APPENDIX A: Prudhoe Bay Unit - Pipeline System

Item	Facility	Location	Type	Service	Equipment ID / Well	ILI Piggable	Maint. Piggable
1065	GC2	L Pad	Well Line	Oil	L-106	No	No
1066	GC2	L Pad	Well Line	Oil	L-107	No	No
1067	GC2	L Pad	Well Line	Produced Water	L-108	No	No
1068	GC2	L Pad	Well Line	Produced Water	L-109	No	No
1069	GC2	L Pad	Well Line	Oil	L-110	No	No
1070	GC2	L Pad	Well Line	Produced Water	L-111	No	No
1071	GC2	L Pad	Well Line	Oil	L-112	No	No
1072	GC2	L Pad	Well Line	Oil	L-114	No	No
1073	GC2	L Pad	Well Line	Produced Water	L-115	No	No
1074	GC2	L Pad	Well Line	Oil	L-116	No	No
1075	GC2	L Pad	Well Line	Produced Water	L-117	No	No
1076	GC2	L Pad	Well Line	Oil	L-118	No	No
1077	GC2	L Pad	Well Line	Produced Water	L-119	No	No
1078	GC2	L Pad	Well Line	Oil	L-120	No	No
1079	GC2	L Pad	Well Line	Oil	L-121	No	No
1080	GC2	L Pad	Well Line	Oil	L-122	No	No
1081	GC2	L Pad	Well Line	Produced Water	L-123	No	No
1082	GC2	L Pad	Well Line	Oil	L-124	No	No
1083	GC2	L Pad	Well Line	Oil	L-200	No	No
1084	GC2	L Pad	Well Line	Oil	L-201	No	No
1085	GC2	L Pad	Well Line	Oil	L-202	No	No
1086	GC2	L Pad	Well Line	Oil	L-204	No	No
1087	GC2	L Pad	Well Line	Oil	L-205	No	No
1088	GC2	L Pad	Well Line	Produced Water	L-210	No	No
1089	GC2	L Pad	Well Line	Produced Water	L-211	No	No
1090	GC2	L Pad	Well Line	Produced Water	L-212	No	No
1091	GC2	L Pad	Well Line	Produced Water	L-213	No	No
1092	GC2	L Pad	Well Line	Produced Water	L-214	No	No
1093	GC2	L Pad	Well Line	Produced Water	L-215	No	No
1094	GC2	L Pad	Well Line	Produced Water	L-216	No	No
1095	GC2	L Pad	Well Line	Produced Water	L-217	No	No
1096	GC2	L Pad	Well Line	Produced Water	L-218	No	No
1097	GC2	L Pad	Well Line	Produced Water	L-219	No	No
1098	GC2	L Pad	Well Line	Produced Water	L-220	No	No
1099	GC2	L Pad	Well Line	Produced Water	L-221	No	No
1100	GC2	L Pad	Well Line	Produced Water	L-222	No	No
1101	GC2	L Pad	Well Line	Oil	L-250	No	No
1102	GC2	L Pad	Flow Line	Produced Water	EWE-69	Yes	Yes

APPENDIX A: Prudhoe Bay Unit - Pipeline System

Item	Facility	Location	Type	Service	Equipment ID / Well	ILI Piggable	Maint. Piggable
1103	GC2	L Pad	Flow Line	Oil	L-74	No	Yes
1104	SIP/F1S1	Lisburne	Flow Line	Produced Water	LPC-SWI	Yes	No
1105	GC2	LV Jct	Flow Line	Oil	LV-LDF	Yes	Yes
1106	GC2	M Pad	Well Line	Produced Water	M-03	No	No
1107	GC2	M Pad	Well Line	Oil	M-04	No	No
1108	GC2	M Pad	Well Line	Oil	M-05	No	No
1109	GC2	M Pad	Well Line	Oil	M-06	No	No
1110	GC2	M Pad	Well Line	Oil	M-07	No	No
1111	GC2	M Pad	Well Line	Oil	M-08	No	No
1112	GC2	M Pad	Well Line	Oil	M-09	No	No
1113	GC2	M Pad	Well Line	Oil	M-10	No	No
1114	GC2	M Pad	Well Line	Oil	M-11	No	No
1115	GC2	M Pad	Well Line	Oil	M-12	No	No
1116	GC2	M Pad	Well Line	Produced Water	M-14	No	No
1117	GC2	M Pad	Well Line	Oil	M-15	No	No
1118	GC2	M Pad	Well Line	Oil	M-16	No	No
1119	GC2	M Pad	Well Line	Oil	M-17	No	No
1120	GC2	M Pad	Well Line	Produced Water	M-18	No	No
1121	GC2	M Pad	Well Line	Oil	M-19	No	No
1122	GC2	M Pad	Well Line	Produced Water	M-20	No	No
1123	GC2	M Pad	Well Line	Oil	M-21	No	No
1124	GC2	M Pad	Well Line	Oil	M-22	No	No
1125	GC2	M Pad	Well Line	Oil	M-23	No	No
1126	GC2	M Pad	Well Line	Oil	M-24	No	No
1127	GC2	M Pad	Well Line	Oil	M-25	No	No
1128	GC2	M Pad	Well Line	Oil	M-26	No	No
1129	GC2	M Pad	Well Line	Oil	M-27	No	No
1130	GC2	M Pad	Well Line	Produced Water	M-28	No	No
1131	GC2	M Pad	Well Line	Produced Water	M-29	No	No
1132	GC2	M Pad	Well Line	Produced Water	M-30	No	No
1133	GC2	M Pad	Well Line	Oil	M-31	No	No
1134	GC2	M Pad	Well Line	Oil	M-32	No	No
1135	GC2	M Pad	Well Line	Oil	M-33	No	No
1136	GC2	M Pad	Well Line	Oil	M-34	No	No
1137	GC2	M Pad	Well Line	Produced Water	M-38	No	No
1138	GC2	M Pad	Flow Line	Produced Water	M-69	Yes	Yes
1139	GC2	M Pad	Flow Line	Oil	M-74	Yes	Yes
1140	GC2	N Pad	Well Line	Oil	N-01	No	No

APPENDIX A: Prudhoe Bay Unit - Pipeline System

Item	Facility	Location	Type	Service	Equipment ID / Well	ILI Piggable	Maint. Piggable
1141	GC2	N Pad	Well Line	Oil	N-02	No	No
1142	GC2	N Pad	Well Line	Oil	N-03	No	No
1143	GC2	N Pad	Well Line	Oil	N-04	No	No
1144	GC2	N Pad	Well Line	Oil	N-06	No	No
1145	GC2	N Pad	Well Line	Oil	N-07	No	No
1146	GC2	N Pad	Well Line	Produced Water	N-08	No	No
1147	GC2	N Pad	Well Line	Oil	N-09	No	No
1148	GC2	N Pad	Well Line	Oil	N-10	No	No
1149	GC2	N Pad	Well Line	Oil	N-11	No	No
1150	GC2	N Pad	Well Line	Oil	N-12	No	No
1151	GC2	N Pad	Well Line	Oil	N-13	No	No
1152	GC2	N Pad	Well Line	Oil	N-14	No	No
1153	GC2	N Pad	Well Line	Oil	N-15	No	No
1154	GC2	N Pad	Well Line	Oil	N-16	No	No
1155	GC2	N Pad	Well Line	Oil	N-17	No	No
1156	GC2	N Pad	Well Line	Oil	N-18	No	No
1157	GC2	N Pad	Well Line	Oil	N-19	No	No
1158	GC2	N Pad	Well Line	Oil	N-20	No	No
1159	GC2	N Pad	Well Line	Oil	N-21	No	No
1160	GC2	N Pad	Well Line	Oil	N-22	No	No
1161	GC2	N Pad	Well Line	Produced Water	N-23	No	No
1162	GC2	N Pad	Well Line	Oil	N-24	No	No
1163	GC2	N Pad	Well Line	Oil	N-25	No	No
1164	GC2	N Pad	Well Line	Oil	N-26	No	No
1165	GC2	N Pad	Well Line	Oil	N-27	No	No
1166	GC2	N Pad	Flow Line	Oil	N-42	No	No
1167	GC2	N Pad	Flow Line	Oil	N-44	No	No
1168	GC2	N Pad	Flow Line	Produced Water	N-69	No	No
1169	GC2	N Pad	Flow Line	Oil	N-74	Yes	Yes
1170	GC1	P Pad	Well Line	Oil	P-01	No	No
1171	GC1	P Pad	Well Line	Produced Water	P-02	No	No
1172	GC1	P Pad	Well Line	Produced Water	P-03	No	No
1173	GC1	P Pad	Well Line	Oil	P-04	No	No
1174	GC1	P Pad	Well Line	Oil	P-05	No	No
1175	GC1	P Pad	Well Line	Produced Water	P-06	No	No
1176	GC1	P Pad	Well Line	Oil	P-07	No	No
1177	GC1	P Pad	Well Line	Oil	P-08	No	No
1178	GC1	P Pad	Well Line	Oil	P-09	No	No

APPENDIX A: Prudhoe Bay Unit - Pipeline System

Item	Facility	Location	Type	Service	Equipment ID / Well	ILI Piggable	Maint. Piggable
1179	GC1	P Pad	Well Line	Produced Water	P-10	No	No
1180	GC1	P Pad	Well Line	Oil	P-11	No	No
1181	GC1	P Pad	Well Line	Oil	P-12	No	No
1182	GC1	P Pad	Well Line	Produced Water	P-13	No	No
1183	GC1	P Pad	Well Line	Produced Water	P-14	No	No
1184	GC1	P Pad	Well Line	Oil	P-15	No	No
1185	GC1	P Pad	Well Line	Oil	P-16	No	No
1186	GC1	P Pad	Well Line	Oil	P-17	No	No
1187	GC1	P Pad	Well Line	Oil	P-18	No	No
1188	GC1	P Pad	Well Line	Oil	P-19	No	No
1189	GC1	P Pad	Well Line	Oil	P-20	No	No
1190	GC1	P Pad	Well Line	Oil	P-21	No	No
1191	GC1	P Pad	Well Line	Oil	P-22	No	No
1192	GC1	P Pad	Well Line	Produced Water	P-23	No	No
1193	GC1	P Pad	Well Line	Produced Water	P-24	No	No
1194	GC1	P Pad	Well Line	Oil	P-25	No	No
1195	GC1	P Pad	Well Line	Oil	P-26	No	No
1196	GC1	P Pad	Well Line	Oil	P-27	No	No
1197	GC1	P Pad	Well Line	Oil	P-28	No	No
1198	GC1	P Pad	Flow Line	Oil	P-36	Yes	Yes
1199	GC2	P Pad	Flow Line	Produced Water	P-69	Yes	Yes
1200	GC1	PM2	Well Line	Oil	P2-01	No	No
1201	GC1	PM2	Well Line	Oil	P2-03	No	No
1202	GC1	PM2	Well Line	Oil	P2-04	No	No
1203	GC1	PM2	Well Line	Oil	P2-07	No	No
1204	GC1	PM2	Well Line	Oil	P2-08	No	No
1205	GC1	PM2	Well Line	Oil	P2-11	No	No
1206	GC1	PM2	Well Line	Oil	P2-12	No	No
1207	GC1	PM2	Well Line	Oil	P2-13	No	No
1208	GC1	PM2	Well Line	Oil	P2-14	No	No
1209	GC1	PM2	Well Line	Oil	P2-17	No	No
1210	GC1	PM2	Well Line	Oil	P2-18	No	No
1211	GC1	PM2	Well Line	Oil	P2-19	No	No
1212	GC1	PM2	Well Line	Oil	P2-21	No	No
1213	GC1	PM2	Well Line	Oil	P2-22	No	No
1214	GC1	PM2	Well Line	Oil	P2-24	No	No
1215	GC1	PM2	Well Line	Oil	P2-25	No	No
1216	GC1	PM2	Well Line	Oil	P2-27	No	No

APPENDIX A: Prudhoe Bay Unit - Pipeline System

Item	Facility	Location	Type	Service	Equipment ID / Well	ILI Piggable	Maint. Piggable
1217	GC1	PM2	Well Line	Oil	P2-30	No	No
1218	GC1	PM2	Well Line	Oil	P2-31	No	No
1219	GC1	PM2	Well Line	Oil	P2-32	No	No
1220	GC1	PM2	Well Line	Oil	P2-33	No	No
1221	GC1	PM2	Well Line	Oil	P2-35	No	No
1222	GC1	PM2	Well Line	Oil	P2-36	No	No
1223	GC1	PM2	Well Line	Oil	P2-40	No	No
1224	GC1	PM2	Well Line	Oil	P2-41	No	No
1225	GC1	PM2	Well Line	Oil	P2-45	No	No
1226	GC1	PM2	Well Line	Oil	P2-48	No	No
1227	GC1	PM2	Well Line	Oil	P2-50	No	No
1228	GC1	PM2	Well Line	Oil	P2-51	No	No
1229	GC1	PM2	Well Line	Oil	P2-52	No	No
1230	GC1	PM2	Well Line	Oil	P2-54	No	No
1231	GC1	PM2	Well Line	Oil	P2-56	No	No
1232	GC1	PM2	Well Line	Oil	P2-58	No	No
1233	GC1	PM2	Well Line	Oil	P2-59	No	No
1234	GC1	PM2/GC1	Flow Line	Oil	STP-36	Yes	Yes
1235	GC2	Q Pad	Flow Line	Oil	Q-01	No	No
1236	GC2	Q Pad	Flow Line	Oil	Q-02	No	No
1237	GC2	Q Pad	Flow Line	Oil	Q-03	No	No
1238	GC2	Q Pad	Flow Line	Oil	Q-04	No	No
1239	GC2	Q Pad	Flow Line	Oil	Q-05	No	No
1240	GC2	Q Pad	Flow Line	Oil	Q-06	No	No
1241	GC2	Q Pad	Flow Line	Oil	Q-07	No	No
1242	GC2	R Pad	Well Line	Oil	R-01	No	No
1243	GC2	R Pad	Well Line	Produced Water	R-02	No	No
1244	GC2	R Pad	Well Line	Produced Water	R-03	No	No
1245	GC2	R Pad	Well Line	Oil	R-04	No	No
1246	GC2	R Pad	Well Line	Produced Water	R-05	No	No
1247	GC2	R Pad	Well Line	Produced Water	R-06	No	No
1248	GC2	R Pad	Well Line	Produced Water	R-07	No	No
1249	GC2	R Pad	Well Line	Oil	R-08	No	No
1250	GC2	R Pad	Well Line	Oil	R-09	No	No
1251	GC2	R Pad	Well Line	Oil	R-10	No	No
1252	GC2	R Pad	Well Line	Produced Water	R-11	No	No
1253	GC2	R Pad	Well Line	Oil	R-12	No	No
1254	GC2	R Pad	Well Line	Produced Water	R-13	No	No

APPENDIX A: Prudhoe Bay Unit - Pipeline System

Item	Facility	Location	Type	Service	Equipment ID / Well	ILI Piggable	Maint. Piggable
1255	GC2	R Pad	Well Line	Oil	R-14	No	No
1256	GC2	R Pad	Well Line	Produced Water	R-15	No	No
1257	GC2	R Pad	Well Line	Oil	R-16	No	No
1258	GC2	R Pad	Well Line	Oil	R-17	No	No
1259	GC2	R Pad	Well Line	Oil	R-18	No	No
1260	GC2	R Pad	Well Line	Oil	R-19	No	No
1261	GC2	R Pad	Well Line	Produced Water	R-20	No	No
1262	GC2	R Pad	Well Line	Oil	R-21	No	No
1263	GC2	R Pad	Well Line	Produced Water	R-22	No	No
1264	GC2	R Pad	Well Line	Oil	R-23	No	No
1265	GC2	R Pad	Well Line	Oil	R-24	No	No
1266	GC2	R Pad	Well Line	Produced Water	R-25	No	No
1267	GC2	R Pad	Well Line	Oil	R-26	No	No
1268	GC2	R Pad	Well Line	Oil	R-27	No	No
1269	GC2	R Pad	Well Line	Oil	R-28	No	No
1270	GC2	R Pad	Well Line	Oil	R-29	No	No
1271	GC2	R Pad	Well Line	Oil	R-30	No	No
1272	GC2	R Pad	Well Line	Oil	R-31	No	No
1273	GC2	R Pad	Well Line	Produced Water	R-32	No	No
1274	GC2	R Pad	Well Line	Produced Water	R-34	No	No
1275	GC2	R Pad	Well Line	Oil	R-35	No	No
1276	GC2	R Pad	Well Line	Oil	R-36	No	No
1277	GC2	R Pad	Well Line	Oil	R-39	No	No
1278	GC2	R Pad	Well Line	Oil	R-40	No	No
1279	GC2	R Pad	Well Line	Oil	R-41	No	No
1280	GC2	R Pad	Flow Line	Produced Water	R-46	Yes	Yes
1281	GC2	R Pad	Flow Line	Oil	R-36	Yes	Yes
1282	GC2	S Pad	Well Line	Oil	S-01	No	No
1283	GC2	S Pad	Well Line	Oil	S-02	No	No
1284	GC2	S Pad	Well Line	Oil	S-03	No	No
1285	GC2	S Pad	Well Line	Produced Water	S-04	No	No
1286	GC2	S Pad	Well Line	Oil	S-05	No	No
1287	GC2	S Pad	Well Line	Produced Water	S-06	No	No
1288	GC2	S Pad	Well Line	Oil	S-07	No	No
1289	GC2	S Pad	Well Line	Oil	S-08	No	No
1290	GC2	S Pad	Well Line	Produced Water	S-09	No	No
1291	GC2	S Pad	Well Line	Oil	S-10	No	No
1292	GC2	S Pad	Well Line	Produced Water	S-11	No	No

APPENDIX A: Prudhoe Bay Unit - Pipeline System

Item	Facility	Location	Type	Service	Equipment ID / Well	ILI Piggable	Maint. Piggable
1293	GC2	S Pad	Well Line	Oil	S-12	No	No
1294	GC2	S Pad	Well Line	Oil	S-13	No	No
1295	GC2	S Pad	Well Line	Produced Water	S-14	No	No
1296	GC2	S Pad	Well Line	Produced Water	S-15	No	No
1297	GC2	S Pad	Well Line	Oil	S-16	No	No
1298	GC2	S Pad	Well Line	Oil	S-17	No	No
1299	GC2	S Pad	Well Line	Oil	S-18	No	No
1300	GC2	S Pad	Well Line	Oil	S-19	No	No
1301	GC2	S Pad	Well Line	Produced Water	S-20	No	No
1302	GC2	S Pad	Well Line	Oil	S-21	No	No
1303	GC2	S Pad	Well Line	Produced Water	S-22	No	No
1304	GC2	S Pad	Well Line	Oil	S-23	No	No
1305	GC2	S Pad	Well Line	Produced Water	S-24	No	No
1306	GC2	S Pad	Well Line	Produced Water	S-25	No	No
1307	GC2	S Pad	Well Line	Oil	S-26	No	No
1308	GC2	S Pad	Well Line	Oil	S-27	No	No
1309	GC2	S Pad	Well Line	Oil	S-28	No	No
1310	GC2	S Pad	Well Line	Produced Water	S-29	No	No
1311	GC2	S Pad	Well Line	Oil	S-30	No	No
1312	GC2	S Pad	Well Line	Produced Water	S-31	No	No
1313	GC2	S Pad	Well Line	Oil	S-32	No	No
1314	GC2	S Pad	Well Line	Oil	S-33	No	No
1315	GC2	S Pad	Well Line	Produced Water	S-34	No	No
1316	GC2	S Pad	Well Line	Oil	S-35	No	No
1317	GC2	S Pad	Well Line	Oil	S-36	No	No
1318	GC2	S Pad	Well Line	Oil	S-37	No	No
1319	GC2	S Pad	Well Line	Oil	S-38	No	No
1320	GC2	S Pad	Well Line	Oil	S-40	No	No
1321	GC2	S Pad	Well Line	Oil	S-41	No	No
1322	GC2	S Pad	Well Line	Oil	S-42	No	No
1323	GC2	S Pad	Well Line	Oil	S-43	No	No
1324	GC2	S Pad	Well Line	Oil	S-44	No	No
1325	GC2	S Pad	Well Line	Oil	S-100	No	No
1326	GC2	S Pad	Well Line	Produced Water	S-101	No	No
1327	GC2	S Pad	Well Line	Oil	S-102	No	No
1328	GC2	S Pad	Well Line	Oil	S-103	No	No
1329	GC2	S Pad	Well Line	Produced Water	S-104	No	No
1330	GC2	S Pad	Well Line	Oil	S-105	No	No

APPENDIX A: Prudhoe Bay Unit - Pipeline System

Item	Facility	Location	Type	Service	Equipment ID / Well	ILI Piggable	Maint. Piggable
1331	GC2	S Pad	Well Line	Oil	S-106	No	No
1332	GC2	S Pad	Well Line	Produced Water	S-107	No	No
1333	GC2	S Pad	Well Line	Oil	S-108	No	No
1334	GC2	S Pad	Well Line	Oil	S-109	No	No
1335	GC2	S Pad	Well Line	Produced Water	S-110	No	No
1336	GC2	S Pad	Well Line	Produced Water	S-111	No	No
1337	GC2	S Pad	Well Line	Produced Water	S-112	No	No
1338	GC2	S Pad	Well Line	Oil	S-113	No	No
1339	GC2	S Pad	Well Line	Produced Water	S-114	No	No
1340	GC2	S Pad	Well Line	Oil	S-115	No	No
1341	GC2	S Pad	Well Line	Produced Water	S-116	No	No
1342	GC2	S Pad	Well Line	Oil	S-117	No	No
1343	GC2	S Pad	Well Line	Oil	S-118	No	No
1344	GC2	S Pad	Well Line	Oil	S-119	No	No
1345	GC2	S Pad	Well Line	Produced Water	S-120	No	No
1346	GC2	S Pad	Well Line	Oil	S-121	No	No
1347	GC2	S Pad	Well Line	Oil	S-122	No	No
1348	GC2	S Pad	Well Line	Produced Water	S-123	No	No
1349	GC2	S Pad	Well Line	Produced Water	S-124	No	No
1350	GC2	S Pad	Well Line	Oil	S-125	No	No
1351	GC2	S Pad	Well Line	Produced Water	S-126	No	No
1352	GC2	S Pad	Well Line	Produced Water	S-134	No	No
1353	GC2	S Pad	Well Line	Oil	S-200	No	No
1354	GC2	S Pad	Well Line	Oil	S-201	No	No
1355	GC2	S Pad	Well Line	Oil	S-213	No	No
1356	GC2	S Pad	Well Line	Produced Water	S-215	No	No
1357	GC2	S Pad	Well Line	Produced Water	S-216	No	No
1358	GC2	S Pad	Well Line	Produced Water	S-217	No	No
1359	GC2	S Pad	Well Line	Produced Water	S-218	No	No
1360	GC2	S Pad	Well Line	Oil	S-400	No	No
1361	GC2	S Pad	Well Line	Produced Water	S-401	No	No
1362	GC2	S Pad	Flow Line	Oil	S-36	Yes	Yes
1363	GC2	S Pad	Flow Line	Produced Water	S-69	Yes	Yes
1364	FS3	FS1	Flow Line	Oil	TLFS1/FS3	No	No
1365	GC3	FS3	Flow Line	Oil	TLGC3/FS3	Yes	Yes
1366	GC2	U Pad	Well Line	Oil	U-02	No	No
1367	GC2	U Pad	Well Line	Produced Water	U-03	No	No
1368	GC2	U Pad	Well Line	Produced Water	U-04	No	No

APPENDIX A: Prudhoe Bay Unit - Pipeline System

Item	Facility	Location	Type	Service	Equipment ID / Well	ILI Piggable	Maint. Piggable
1369	GC2	U Pad	Well Line	Produced Water	U-05	No	No
1370	GC2	U Pad	Well Line	Oil	U-06	No	No
1371	GC2	U Pad	Well Line	Oil	U-07	No	No
1372	GC2	U Pad	Well Line	Oil	U-08	No	No
1373	GC2	U Pad	Well Line	Oil	U-09	No	No
1374	GC2	U Pad	Well Line	Produced Water	U-10	No	No
1375	GC2	U Pad	Well Line	Oil	U-11	No	No
1376	GC2	U Pad	Well Line	Oil	U-12	No	No
1377	GC2	U Pad	Well Line	Oil	U-13	No	No
1378	GC2	U Pad	Well Line	Oil	U-14	No	No
1379	GC2	U Pad	Well Line	Oil	U-15	No	No
1380	GC2	U Pad	Flow Line	Produced Water	U-69	No	No
1381	GC2	U Pad	Flow Line	Oil	U-384	Yes	Yes
1382	GC2	V Pad	Well Line	Oil	V-01	No	No
1383	GC2	V Pad	Well Line	Oil	V-02	No	No
1384	GC2	V Pad	Well Line	Oil	V-03	No	No
1385	GC2	V Pad	Well Line	Oil	V-04	No	No
1386	GC2	V Pad	Well Line	Oil	V-05	No	No
1387	GC2	V Pad	Well Line	Oil	V-07	No	No
1388	GC2	V Pad	Well Line	Produced Water	V-100	No	No
1389	GC2	V Pad	Well Line	Oil	V-101	No	No
1390	GC2	V Pad	Well Line	Oil	V-102	No	No
1391	GC2	V Pad	Well Line	Oil	V-103	No	No
1392	GC2	V Pad	Well Line	Produced Water	V-104	No	No
1393	GC2	V Pad	Well Line	Produced Water	V-105	No	No
1394	GC2	V Pad	Well Line	Oil	V-106	No	No
1395	GC2	V Pad	Well Line	Oil	V-107	No	No
1396	GC2	V Pad	Well Line	Oil	V-108	No	No
1397	GC2	V Pad	Well Line	Oil	V-109	No	No
1398	GC2	V Pad	Well Line	Oil	V-111	No	No
1399	GC2	V Pad	Well Line	Produced Water	V-112	No	No
1400	GC2	V Pad	Well Line	Oil	V-113	No	No
1401	GC2	V Pad	Well Line	Produced Water	V-114	No	No
1402	GC2	V Pad	Well Line	Oil	V-115	No	No
1403	GC2	V Pad	Well Line	Oil	V-117	No	No
1404	GC2	V Pad	Well Line	Produced Water	V-119	No	No
1405	GC2	V Pad	Well Line	Produced Water	V-120	No	No
1406	GC2	V Pad	Well Line	Produced Water	V-121	No	No

APPENDIX A: Prudhoe Bay Unit - Pipeline System

Item	Facility	Location	Type	Service	Equipment ID / Well	ILI Piggable	Maint. Piggable
1407	GC2	V Pad	Well Line	Oil	V-122	No	No
1408	GC2	V Pad	Well Line	Produced Water	V-123	No	No
1409	GC2	V Pad	Well Line	Produced Water	V-201	No	No
1410	GC2	V Pad	Well Line	Oil	V-202	No	No
1411	GC2	V Pad	Well Line	Oil	V-203	No	No
1412	GC2	V Pad	Well Line	Oil	V-204	No	No
1413	GC2	V Pad	Well Line	Oil	V-205	No	No
1414	GC2	V Pad	Well Line	Oil	V-207	No	No
1415	GC2	V Pad	Well Line	Produced Water	V-210	No	No
1416	GC2	V Pad	Well Line	Produced Water	V-211	No	No
1417	GC2	V Pad	Well Line	Produced Water	V-212	No	No
1418	GC2	V Pad	Well Line	Produced Water	V-213	No	No
1419	GC2	V Pad	Well Line	Produced Water	V-214	No	No
1420	GC2	V Pad	Well Line	Produced Water	V-215	No	No
1421	GC2	V Pad	Well Line	Produced Water	V-216	No	No
1422	GC2	V Pad	Well Line	Produced Water	V-217	No	No
1423	GC2	V Pad	Well Line	Produced Water	V-218	No	No
1424	GC2	V Pad	Well Line	Produced Water	V-219	No	No
1425	GC2	V Pad	Well Line	Produced Water	V-220	No	No
1426	GC2	V Pad	Well Line	Produced Water	V-221	No	No
1427	GC2	V Pad	Well Line	Produced Water	V-222	No	No
1428	GC2	V Pad	Well Line	Produced Water	V-223	No	No
1429	GC2	V Pad	Well Line	Produced Water	V-224	No	No
1430	GC2	V Pad	Well Line	Produced Water	V-225	No	No
1431	GC2	V Pad	Well Line	Produced Water	V-227	No	No
1432	GC2	V Pad	Flow Line	Produced Water	V-69	No	No
1433	GC2	V Pad	Flow Line	Oil	V-74	No	No
1434	GC2	W Pad	Well Line	Oil	W-01	No	No
1435	GC2	W Pad	Well Line	Oil	W-02	No	No
1436	GC2	W Pad	Well Line	Produced Water	W-03	No	No
1437	GC2	W Pad	Well Line	Oil	W-04	No	No
1438	GC2	W Pad	Well Line	Oil	W-05	No	No
1439	GC2	W Pad	Well Line	Oil	W-06	No	No
1440	GC2	W Pad	Well Line	Oil	W-07	No	No
1441	GC2	W Pad	Well Line	Oil	W-08	No	No
1442	GC2	W Pad	Well Line	Oil	W-10	No	No
1443	GC2	W Pad	Well Line	Produced Water	W-11	No	No
1444	GC2	W Pad	Well Line	Oil	W-12	No	No

APPENDIX A: Prudhoe Bay Unit - Pipeline System

Item	Facility	Location	Type	Service	Equipment ID / Well	ILI Piggable	Maint. Piggable
1445	GC2	W Pad	Well Line	Oil	W-15	No	No
1446	GC2	W Pad	Well Line	Oil	W-16	No	No
1447	GC2	W Pad	Well Line	Produced Water	W-17	No	No
1448	GC2	W Pad	Well Line	Oil	W-18	No	No
1449	GC2	W Pad	Well Line	Oil	W-19	No	No
1450	GC2	W Pad	Well Line	Produced Water	W-20	No	No
1451	GC2	W Pad	Well Line	Oil	W-21	No	No
1452	GC2	W Pad	Well Line	Oil	W-22	No	No
1453	GC2	W Pad	Well Line	Oil	W-23	No	No
1454	GC2	W Pad	Well Line	Produced Water	W-24	No	No
1455	GC2	W Pad	Well Line	Oil	W-25	No	No
1456	GC2	W Pad	Well Line	Oil	W-26	No	No
1457	GC2	W Pad	Well Line	Oil	W-27	No	No
1458	GC2	W Pad	Well Line	Produced Water	W-29	No	No
1459	GC2	W Pad	Well Line	Oil	W-30	No	No
1460	GC2	W Pad	Well Line	Oil	W-31	No	No
1461	GC2	W Pad	Well Line	Oil	W-32	No	No
1462	GC2	W Pad	Well Line	Oil	W-34	No	No
1463	GC2	W Pad	Well Line	Produced Water	W-35	No	No
1464	GC2	W Pad	Well Line	Oil	W-36	No	No
1465	GC2	W Pad	Well Line	Oil	W-37	No	No
1466	GC2	W Pad	Well Line	Oil	W-38	No	No
1467	GC2	W Pad	Well Line	Oil	W-39	No	No
1468	GC2	W Pad	Well Line	Oil	W-40	No	No
1469	GC2	W Pad	Well Line	Produced Water	W-42	No	No
1470	GC2	W Pad	Well Line	Produced Water	W-44	No	No
1471	GC2	W Pad	Well Line	Oil	W-45	No	No
1472	GC2	W Pad	Well Line	Oil	W-56	No	No
1473	GC2	W Pad	Well Line	Oil	W-200	No	No
1474	GC2	W Pad	Well Line	Oil	W-201	No	No
1475	GC2	W Pad	Well Line	Oil	W-203	No	No
1476	GC2	W Pad	Well Line	Oil	W-204	No	No
1477	GC2	W Pad	Well Line	Oil	W-205	No	No
1478	GC2	W Pad	Well Line	Produced Water	W-207	No	No
1479	GC2	W Pad	Well Line	Produced Water	W-209	No	No
1480	GC2	W Pad	Well Line	Produced Water	W-210	No	No
1481	GC2	W Pad	Well Line	Oil	W-211	No	No
1482	GC2	W Pad	Well Line	Produced Water	W-212	No	No

APPENDIX A: Prudhoe Bay Unit - Pipeline System

Item	Facility	Location	Type	Service	Equipment ID / Well	ILI Piggable	Maint. Piggable
1483	GC2	W Pad	Well Line	Produced Water	W-213	No	No
1484	GC2	W Pad	Well Line	Produced Water	W-214	No	No
1485	GC2	W Pad	Well Line	Produced Water	W-215	No	No
1486	GC2	W Pad	Well Line	Produced Water	W-216	No	No
1487	GC2	W Pad	Well Line	Produced Water	W-217	No	No
1488	GC2	W Pad	Well Line	Produced Water	W-218	No	No
1489	GC2	W Pad	Well Line	Produced Water	W-219	No	No
1490	GC2	W Pad	Well Line	Oil	W-400	No	No
1491	GC2	W Pad	Flow Line	Produced Water	W-69	No	No
1492	GC2	W Pad	Flow Line	Oil	W-74	Yes	Yes
1493	GC1	GC2	Flow Line	Produced Water	WSW-2	Yes	Yes
1494	GC3	GC1	Flow Line	Produced Water	WSW-3	Yes	Yes
1495	GC2	EWE Jct	Flow Line	Oil	WZ-LDF	Yes	Yes
1496	GC3	X Pad	Well Line	Oil	X-01	No	No
1497	GC3	X Pad	Well Line	Oil	X-02	No	No
1498	GC3	X Pad	Well Line	Oil	X-03	No	No
1499	GC3	X Pad	Well Line	Oil	X-04	No	No
1500	GC3	X Pad	Well Line	Oil	X-05	No	No
1501	GC3	X Pad	Well Line	Produced Water	X-06	No	No
1502	GC3	X Pad	Well Line	Oil	X-07	No	No
1503	GC3	X Pad	Well Line	Oil	X-08	No	No
1504	GC3	X Pad	Well Line	Oil	X-09	No	No
1505	GC3	X Pad	Well Line	Oil	X-10	No	No
1506	GC3	X Pad	Well Line	Produced Water	X-11	No	No
1507	GC3	X Pad	Well Line	Oil	X-12	No	No
1508	GC3	X Pad	Well Line	Oil	X-13	No	No
1509	GC3	X Pad	Well Line	Oil	X-14	No	No
1510	GC3	X Pad	Well Line	Oil	X-15	No	No
1511	GC3	X Pad	Well Line	Oil	X-16	No	No
1512	GC3	X Pad	Well Line	Oil	X-17	No	No
1513	GC3	X Pad	Well Line	Oil	X-18	No	No
1514	GC3	X Pad	Well Line	Oil	X-19	No	No
1515	GC3	X Pad	Well Line	Produced Water	X-20	No	No
1516	GC3	X Pad	Well Line	Oil	X-21	No	No
1517	GC3	X Pad	Well Line	Oil	X-22	No	No
1518	GC3	X Pad	Well Line	Produced Water	X-23	No	No
1519	GC3	X Pad	Well Line	Produced Water	X-24	No	No
1520	GC3	X Pad	Well Line	Oil	X-25	No	No

APPENDIX A: Prudhoe Bay Unit - Pipeline System

Item	Facility	Location	Type	Service	Equipment ID / Well	ILI Piggable	Maint. Piggable
1521	GC3	X Pad	Well Line	Produced Water	X-26	No	No
1522	GC3	X Pad	Well Line	Oil	X-27	No	No
1523	GC3	X Pad	Well Line	Produced Water	X-28	No	No
1524	GC3	X Pad	Well Line	Produced Water	X-29	No	No
1525	GC3	X Pad	Well Line	Oil	X-30	No	No
1526	GC3	X Pad	Well Line	Oil	X-31	No	No
1527	GC3	X Pad	Well Line	Oil	X-32	No	No
1528	GC3	X Pad	Well Line	Produced Water	X-33	No	No
1529	GC3	X Pad	Well Line	Oil	X-34	No	No
1530	GC3	X Pad	Well Line	Oil	X-35	No	No
1531	GC3	X Pad	Well Line	Produced Water	X-36	No	No
1532	GC3	X Pad	Flow Line	Produced Water	X-42	Yes	Yes
1533	GC3	X Pad	Flow Line	Produced Water	X-45	Yes	Yes
1534	GC3	X Pad	Flow Line	Oil	X-74	Yes	Yes
1535	GC2	GC1	Flow Line	Oil	XF-21	Yes	No
1536	GC1	GC3	Flow Line	Oil	XF-31	Yes	No
1537	GC1	Y Pad	Well Line	Oil	Y-01	No	No
1538	GC1	Y Pad	Well Line	Oil	Y-02	No	No
1539	GC1	Y Pad	Well Line	Produced Water	Y-03	No	No
1540	GC1	Y Pad	Well Line	Oil	Y-04	No	No
1541	GC1	Y Pad	Well Line	Produced Water	Y-05	No	No
1542	GC1	Y Pad	Well Line	Produced Water	Y-06	No	No
1543	GC1	Y Pad	Well Line	Produced Water	Y-07	No	No
1544	GC1	Y Pad	Well Line	Oil	Y-08	No	No
1545	GC1	Y Pad	Well Line	Oil	Y-09	No	No
1546	GC1	Y Pad	Well Line	Produced Water	Y-10	No	No
1547	GC1	Y Pad	Well Line	Produced Water	Y-11	No	No
1548	GC1	Y Pad	Well Line	Oil	Y-12	No	No
1549	GC1	Y Pad	Well Line	Oil	Y-13	No	No
1550	GC1	Y Pad	Well Line	Oil	Y-14	No	No
1551	GC1	Y Pad	Well Line	Oil	Y-15	No	No
1552	GC1	Y Pad	Well Line	Oil	Y-16	No	No
1553	GC1	Y Pad	Well Line	Oil	Y-17	No	No
1554	GC1	Y Pad	Well Line	Produced Water	Y-18	No	No
1555	GC1	Y Pad	Well Line	Oil	Y-19	No	No
1556	GC1	Y Pad	Well Line	Oil	Y-20	No	No
1557	GC1	Y Pad	Well Line	Oil	Y-21	No	No
1558	GC1	Y Pad	Well Line	Oil	Y-22	No	No

APPENDIX A: Prudhoe Bay Unit - Pipeline System

Item	Facility	Location	Type	Service	Equipment ID / Well	ILI Piggable	Maint. Piggable
1559	GC1	Y Pad	Well Line	Oil	Y-23	No	No
1560	GC1	Y Pad	Well Line	Produced Water	Y-24	No	No
1561	GC1	Y Pad	Well Line	Oil	Y-26	No	No
1562	GC1	Y Pad	Well Line	Produced Water	Y-27	No	No
1563	GC1	Y Pad	Well Line	Oil	Y-28	No	No
1564	GC1	Y Pad	Well Line	Oil	Y-29	No	No
1565	GC1	Y Pad	Well Line	Oil	Y-30	No	No
1566	GC1	Y Pad	Well Line	Oil	Y-31	No	No
1567	GC1	Y Pad	Well Line	Oil	Y-32	No	No
1568	GC1	Y Pad	Well Line	Oil	Y-33	No	No
1569	GC1	Y Pad	Well Line	Oil	Y-34	No	No
1570	GC1	Y Pad	Well Line	Oil	Y-35	No	No
1571	GC1	Y Pad	Well Line	Oil	Y-36	No	No
1572	GC1	Y Pad	Well Line	Oil	Y-37	No	No
1573	GC1	Y Pad	Well Line	Oil	Y-38	No	No
1574	GC1	Y Pad	Flow Line	Oil	Y-36	Yes	Yes
1575	GC2	H Pad	Flow Line	Oil	Y-42	No	No
1576	GC2	H Pad	Flow Line	Oil	Y-43	No	No
1577	GC2	H Pad	Flow Line	Oil	Y-46	No	No
1578	GC2	Y Pad	Flow Line	Produced Water	Y-69	Yes	Yes
1579	GC2	Z Pad	Well Line	Oil	Z-01	No	No
1580	GC2	Z Pad	Well Line	Produced Water	Z-02	No	No
1581	GC2	Z Pad	Well Line	Oil	Z-03	No	No
1582	GC2	Z Pad	Well Line	Oil	Z-04	No	No
1583	GC2	Z Pad	Well Line	Oil	Z-05	No	No
1584	GC2	Z Pad	Well Line	Oil	Z-06	No	No
1585	GC2	Z Pad	Well Line	Oil	Z-07	No	No
1586	GC2	Z Pad	Well Line	Oil	Z-08	No	No
1587	GC2	Z Pad	Well Line	Oil	Z-09	No	No
1588	GC2	Z Pad	Well Line	Oil	Z-10	No	No
1589	GC2	Z Pad	Well Line	Oil	Z-11	No	No
1590	GC2	Z Pad	Well Line	Produced Water	Z-12	No	No
1591	GC2	Z Pad	Well Line	Oil	Z-13	No	No
1592	GC2	Z Pad	Well Line	Oil	Z-14	No	No
1593	GC2	Z Pad	Well Line	Oil	Z-15	No	No
1594	GC2	Z Pad	Well Line	Oil	Z-16	No	No
1595	GC2	Z Pad	Well Line	Oil	Z-17	No	No
1596	GC2	Z Pad	Well Line	Produced Water	Z-18	No	No

APPENDIX A: Prudhoe Bay Unit - Pipeline System

Item	Facility	Location	Type	Service	Equipment ID / Well	ILI Piggable	Maint. Piggable
1597	GC2	Z Pad	Well Line	Produced Water	Z-19	No	No
1598	GC2	Z Pad	Well Line	Oil	Z-20	No	No
1599	GC2	Z Pad	Well Line	Oil	Z-21	No	No
1600	GC2	Z Pad	Well Line	Oil	Z-22	No	No
1601	GC2	Z Pad	Well Line	Oil	Z-23	No	No
1602	GC2	Z Pad	Well Line	Oil	Z-24	No	No
1603	GC2	Z Pad	Well Line	Produced Water	Z-25	No	No
1604	GC2	Z Pad	Well Line	Oil	Z-26	No	No
1605	GC2	Z Pad	Well Line	Oil	Z-27	No	No
1606	GC2	Z Pad	Well Line	Produced Water	Z-28	No	No
1607	GC2	Z Pad	Well Line	Oil	Z-29	No	No
1608	GC2	Z Pad	Well Line	Oil	Z-30	No	No
1609	GC2	Z Pad	Well Line	Produced Water	Z-31	No	No
1610	GC2	Z Pad	Well Line	Oil	Z-32	No	No
1611	GC2	Z Pad	Well Line	Produced Water	Z-33	No	No
1612	GC2	Z Pad	Well Line	Oil	Z-35	No	No
1613	GC2	Z Pad	Well Line	Oil	Z-38	No	No
1614	GC2	Z Pad	Well Line	Oil	Z-39	No	No
1615	GC2	Z Pad	Well Line	Oil	Z-46	No	No
1616	GC2	Z Pad	Well Line	Oil	Z-100	No	No
1617	GC2	Z Pad	Well Line	Oil	Z-101	No	No
1618	GC2	Z Pad	Well Line	Produced Water	Z-102	No	No
1619	GC2	Z Pad	Well Line	Produced Water	Z-103	No	No
1620	GC2	Z Pad	Well Line	Oil	Z-108	No	No
1621	GC2	Z Pad	Well Line	Oil	Z-112	No	No
1622	GC2	Z Pad	Flow Line	Produced Water	Z-69	No	No
1623	GC2	Z Pad	Flow Line	Oil	Z-74	Yes	Yes